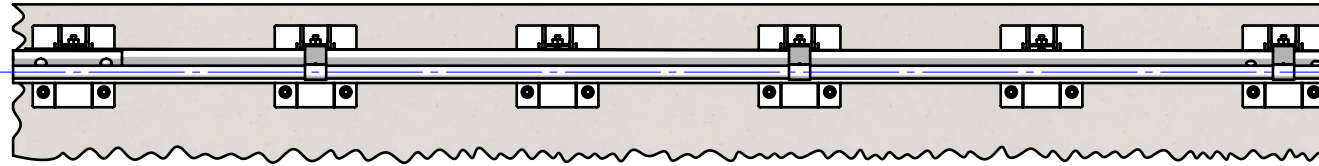


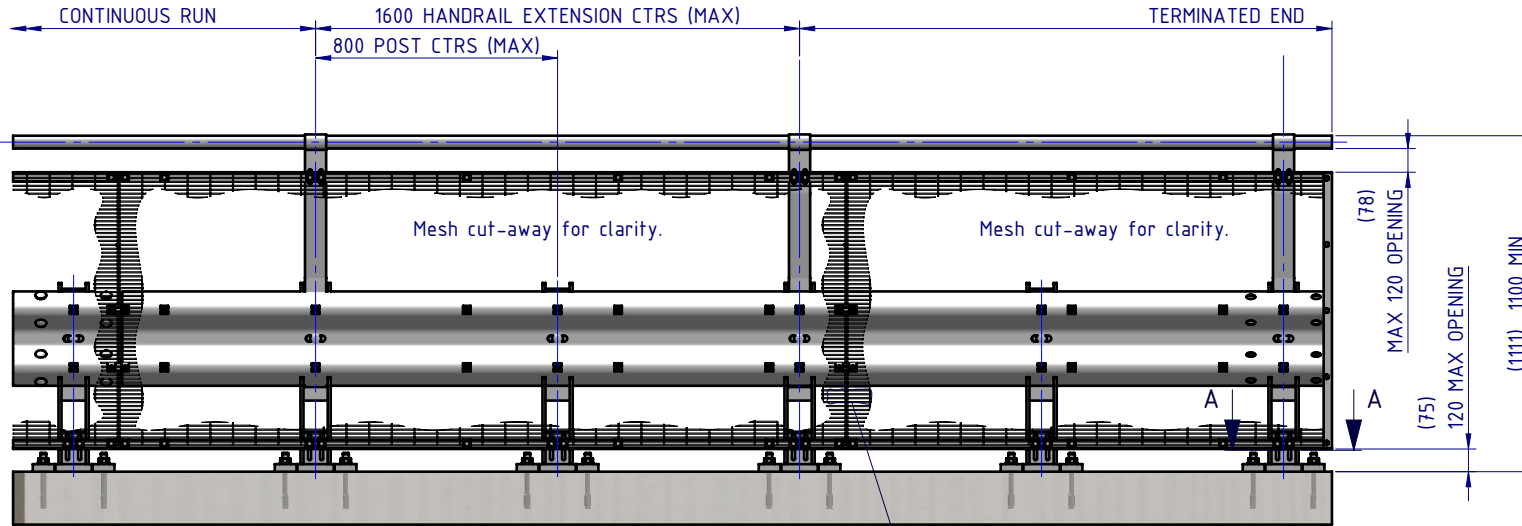
Rhino-Stop® Heavy Duty has been assessed to the 240kN impact load as described in AS/NZS 1170.1 clause 3.8 a) ii) for Light Traffic Areas, based on:

- Post spacing at Maximum 0.8 mtrs Centres
- Minimum 6 Post Assembly per Installation

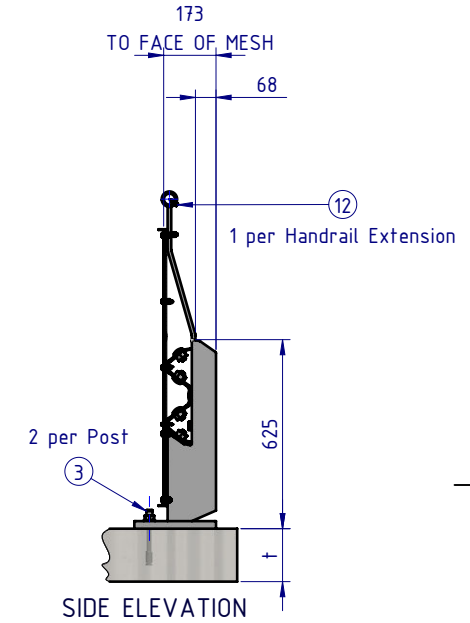
REVISIONS		DATE	APPV'D
A	Original Issue, supersedes GR-WB-173	09/02/2023	HW
B	Revision updated	09/02/2023	HW
C	Rhino-Stop Heavy Duty Post, revision updated	27/06/2025	HW



PLAN VIEW

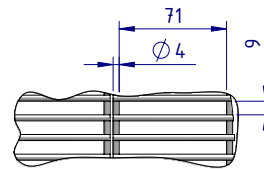


FRONT ELEVATION

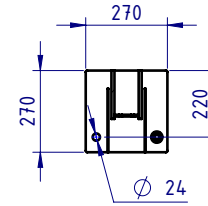


SIDE ELEVATION

BOM			
ITEM NO.	PART NUMBER	DESCRIPTION	Weight kg
1	GR-PB-IS-0625-DG	Rhino-Stop® Heavy Duty Post	25.61
2	GR-MX-MX-0800-AG	Handrail Extension Type 4	5.28
3	GR-FS-20-0187-HG	FISCHER FBN II, M20x187mm	0.47
4	GR-WB-SR-4000-GG	W-Beam Guardrail 4.0m NLL, 0.8m CTRS	43.30
5	GR-EA-30-6000-BG	Mesh Support Angle	6.58
6	GR-EA-30-6000-BG	Mesh Support Angle	1.00
7	HR-PI-32-6500-AG	Handrail / Sight Rail Pipe 32NB	20.11
8	GR-MX-MX-2409-AG	Mesh Infill Panel 2400x900, Ø4 wire, 71x9 aparture	3.99
9	GR-FS-16-0045-HG	M16x45 Hex Head Bolt & Nut Assy	0.02
10	GR-FS-16-0032-MG	M16x32 Mushroom Head SPLICE Bolt & Oversize Nut Assy CL8.8	0.21
11	GR-FS-16-0050-MG	M16x50 Mushroom Head POST Bolt & Oversize Nut Assy Class 4.6	0.23
12	GR-FS-14-0025-TG	14g x 25mm Hex Head Screw Self Tapping, 10 tpi, Class5, B8 Coating	
13	GR-FS-12-0035-TG	12g x 35mm Hex Head Screw Self Tapping, 10 tpi, Class5, B8 Coating	
14	GR-FS-08-0040-MG	M8x40 Mushroom Head Bolt & Nut Assy Class 4.6 HDG	0.00
15	GR-FS-08-0025-MG	M8x25 Mushroom Head Bolt & Nut Assy CL4.6 HDG	0.00
16	GR-FS-08-0000-AG	M8 Square Hole Mesh Washer	0.01
17	GE-FS-08-0025-HG	M8x25 Hex Head Screw Class 8.8 B Coating	
18	GE-FS-08-0000-HG	M8 Hex Nut Class5 B-Coating	



DETAIL B
MESH DETAIL
SCALE 1:5



SECTION A-A
BASE PLATE
DETAIL

MATERIAL:		
FINISH:		
STATUS	NAME	DATE
DRAWN	W. Rogulski	20/07/2022
CHK'D	T. Colquhoun	11/09/2025
APPV'D	H. Wallace	11/09/2025

SafeDirection
CRASH BARRIER SOLUTIONS

COPYRIGHT: All rights reserved. ABN: 53 156 459 684
These drawings, plans and specifications and the copyright therein are the properties of Safe Direction Pty Ltd, and must not be used, reproduced or copied wholly or in part without written permission.
U.N.O. TOLERANCES: ±1mm
ALL DIMENSIONS ARE IN: mm

APPROVED

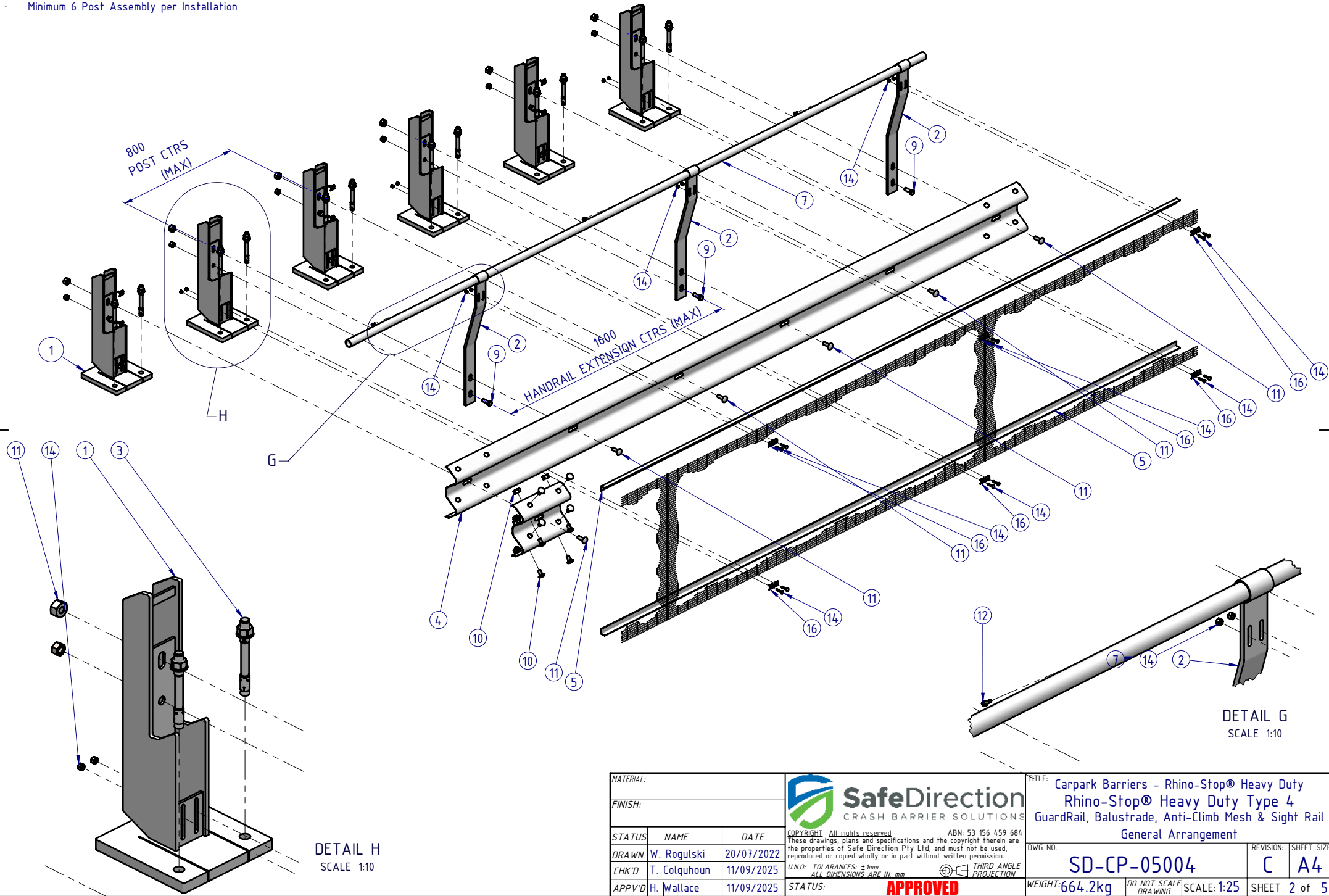
Post Anchor Bolt Installation Details	
Min. Slab Thickness (t)	≥ 150mm
Min. Concrete Strength	32MPa
Anchor Bolt Part #	GR-FS-20-0187-HG
Anchor Bolt Type	Fischer FBN II Mechanical
Drill Type	Masonry Bit
Drill Diameter	Ø20mm
Min. Drill Hole Depth	115mm
Anchor Torque	200Nm

TITLE: Carpark Barriers - Rhino-Stop® Heavy Duty Rhino-Stop® Heavy Duty Type 4 GuardRail, Balustrade, Anti-Climb Mesh & Sight Rail General Arrangement

DWG NO: **SD-CP-05004** REVISION: **C** SHEET SIZE: **A4**


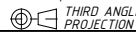
WEIGHT: **664.2kg** DO NOT SCALE DRAWING SCALE: **1:25** SHEET **1** of **5**

Rhino-Stop® Heavy Duty has been assessed to the 240kN impact load as described in AS/NZS 1170.1 clause 3.8 a) ii) for Light Traffic Areas, based on:
 • Post spacing at Maximum 0.8 mtrs Centres
 • Minimum 6 Post Assembly per Installation



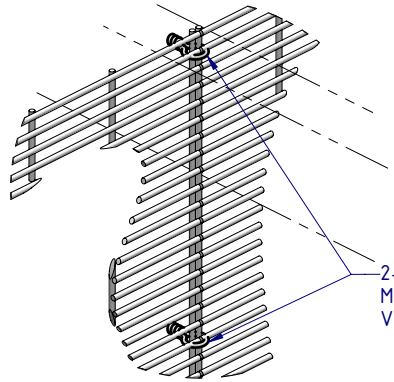
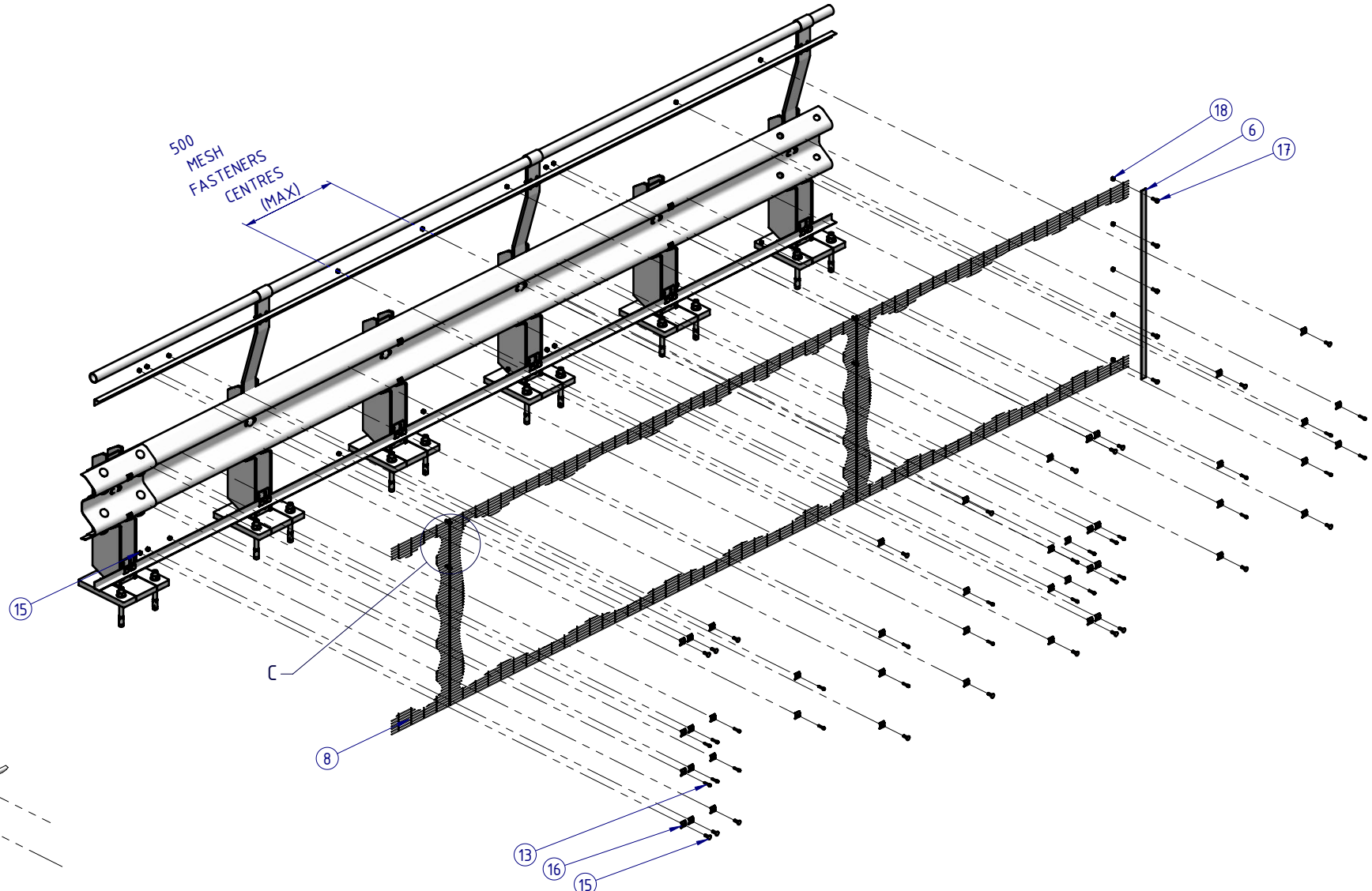
DETAIL H
SCALE 1:10

DETAIL G
SCALE 1:10



MATERIAL:			 SafeDirection CRASH BARRIER SOLUTIONS		TITLE: Carpark Barriers - Rhino-Stop® Heavy Duty Rhino-Stop® Heavy Duty Type 4 GuardRail, Balustrade, Anti-Climb Mesh & Sight Rail General Arrangement							
FINISH:					DWG NO. SD-CP-05004 REVISION: C SHEET SIZE: A4							
STATUS	NAME	DATE	COPYRIGHT: All rights reserved. ABN: 53 156 459 684 These drawings, plans and specifications and the copyright therein are the properties of Safe Direction Pty Ltd, and must not be used, reproduced or copied wholly or in part without written permission. U.N.O: TOLERANCES: ±1mm ALL DIMENSIONS ARE IN: mm  THIRD ANGLE PROJECTION			WEIGHT: 664.2kg		DO NOT SCALE DRAWING	SCALE: 1:25	SHEET 2 of 5		
DRAWN	W. Rogulski	20/07/2022				STATUS: APPROVED		DATE: 11/09/2025				
CHK'D	T. Colquhoun	11/09/2025										
APPV'D	H. Wallace	11/09/2025										

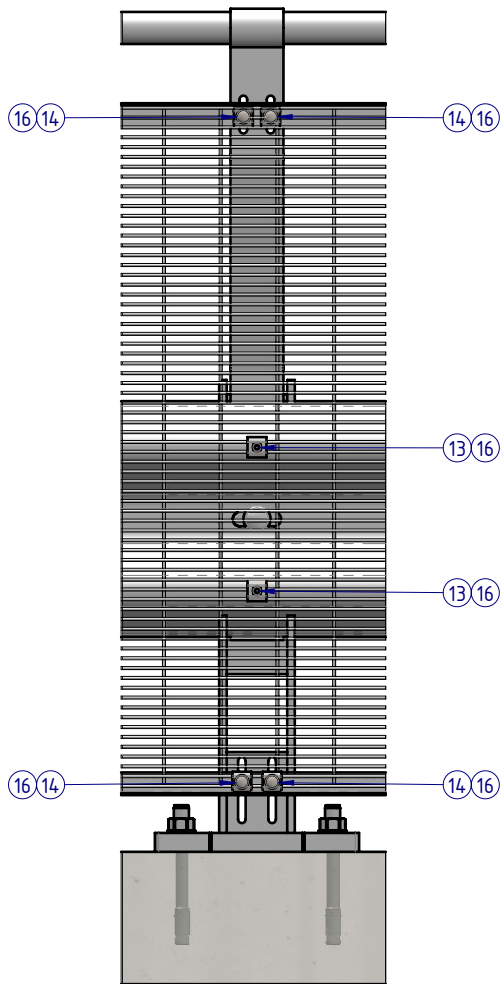
Rhino-Stop® Heavy Duty has been assessed to the 240kN impact load as described in AS/NZS 1170.1 clause 3.8 a) ii) for Light Traffic Areas, based on:

- Post spacing at Maximum 0.8 mtrs Centres
- Minimum 6 Post Assembly per Installation

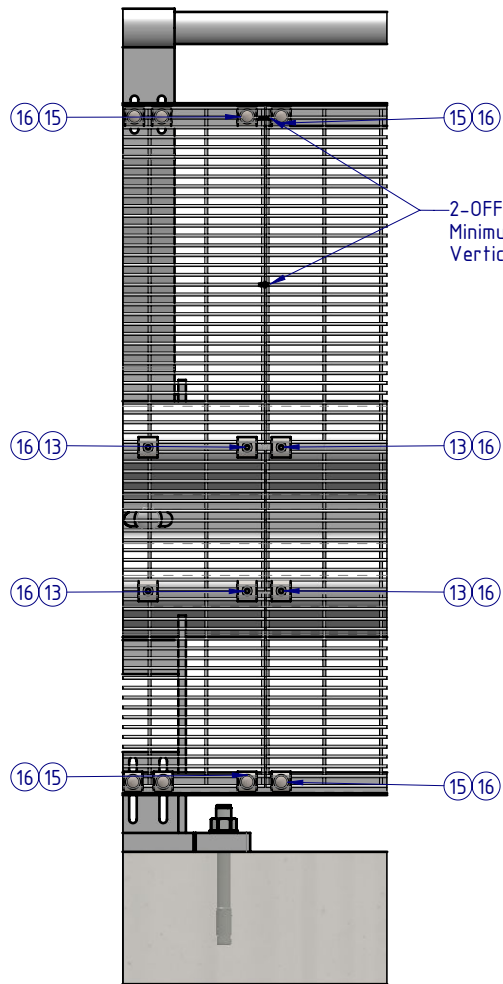


DETAIL C
SCALE 1:5

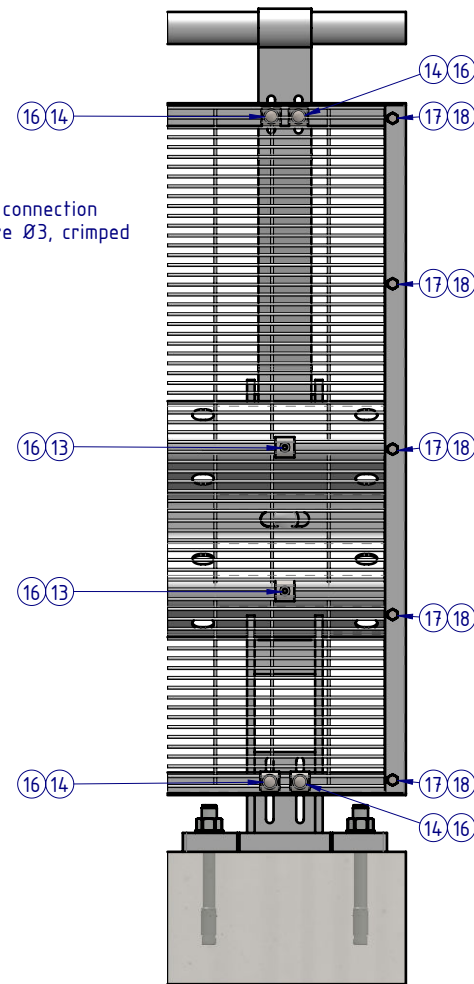
MATERIAL:			 SafeDirection CRASH BARRIER SOLUTIONS	TITLE: Carpark Barriers - Rhino-Stop® Heavy Duty Rhino-Stop® Heavy Duty Type 4 GuardRail, Balustrade, Anti-Climb Mesh & Sight Rail General Arrangement		
FINISH:				DWG NO: SD-CP-05004 REVISION: C SHEET SIZE: A4		
STATUS	NAME	DATE	<small>COPYRIGHT: All rights reserved. ABN: 53 156 459 684 These drawings, plans and specifications and the copyright therein are the properties of Safe Direction Pty Ltd, and must not be used, reproduced or copied wholly or in part without written permission. U.N.O: TOLERANCES: ±1mm ALL DIMENSIONS ARE IN: mm</small>  APPROVED			
DRAWN	W. Rogulski	20/07/2022				
CHK'D	T. Colquhoun	11/09/2025				
APPV'D	H. Wallace	11/09/2025				
WEIGHT: 664.2kg			DO NOT SCALE DRAWING	SCALE: 1:25	SHEET 3 of 5	



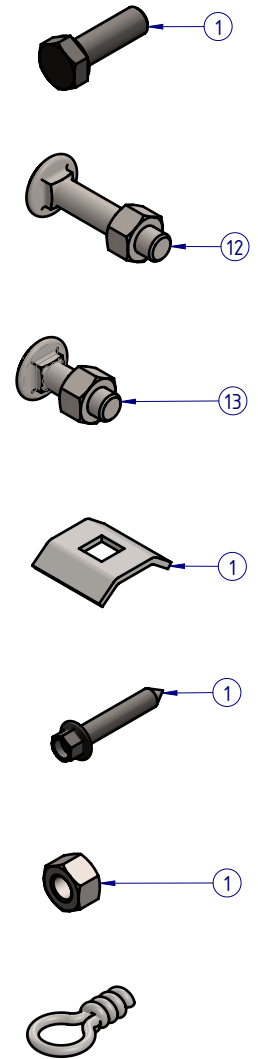
DETAIL D
AT POST CONNECTION



DETAIL E
MESH PANEL CONNECTION



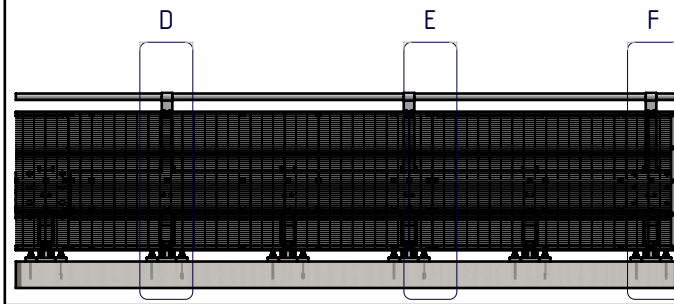
DETAIL F
TERMINATION CONNECTION



MESH PANEL CONNECTION DETAILS

ALL FASTENERS TO BE USED AS SHOWN
ACCORDING TO CONNECTION TYPE

Rhino-Stop® Heavy Duty Carpark Barriers has been assessed to the 240kN impact load as described in AS/NZS 1170.1 clause 3.8 a) ii) for Light Traffic Areas, based on:
· Post spacing at Maximum 0.8 mtrs Centres
· Minimum 6 Post Assembly per Installation



MATERIAL:		
FINISH:		
STATUS	NAME	DATE
DRAWN	W. Rogulski	20/07/2022
CHK'D	T. Colquhoun	11/09/2025
APPV'D	H. Wallace	11/09/2025

SafeDirection
CRASH BARRIER SOLUTIONS

COPYRIGHT All rights reserved. ABN: 53 156 459 684
These drawings, plans and specifications and the copyright therein are the properties of Safe Direction Pty Ltd, and must not be used, reproduced or copied wholly or in part without written permission.

U.N.O. TOLERANCES: ±1mm
ALL DIMENSIONS ARE IN: mm

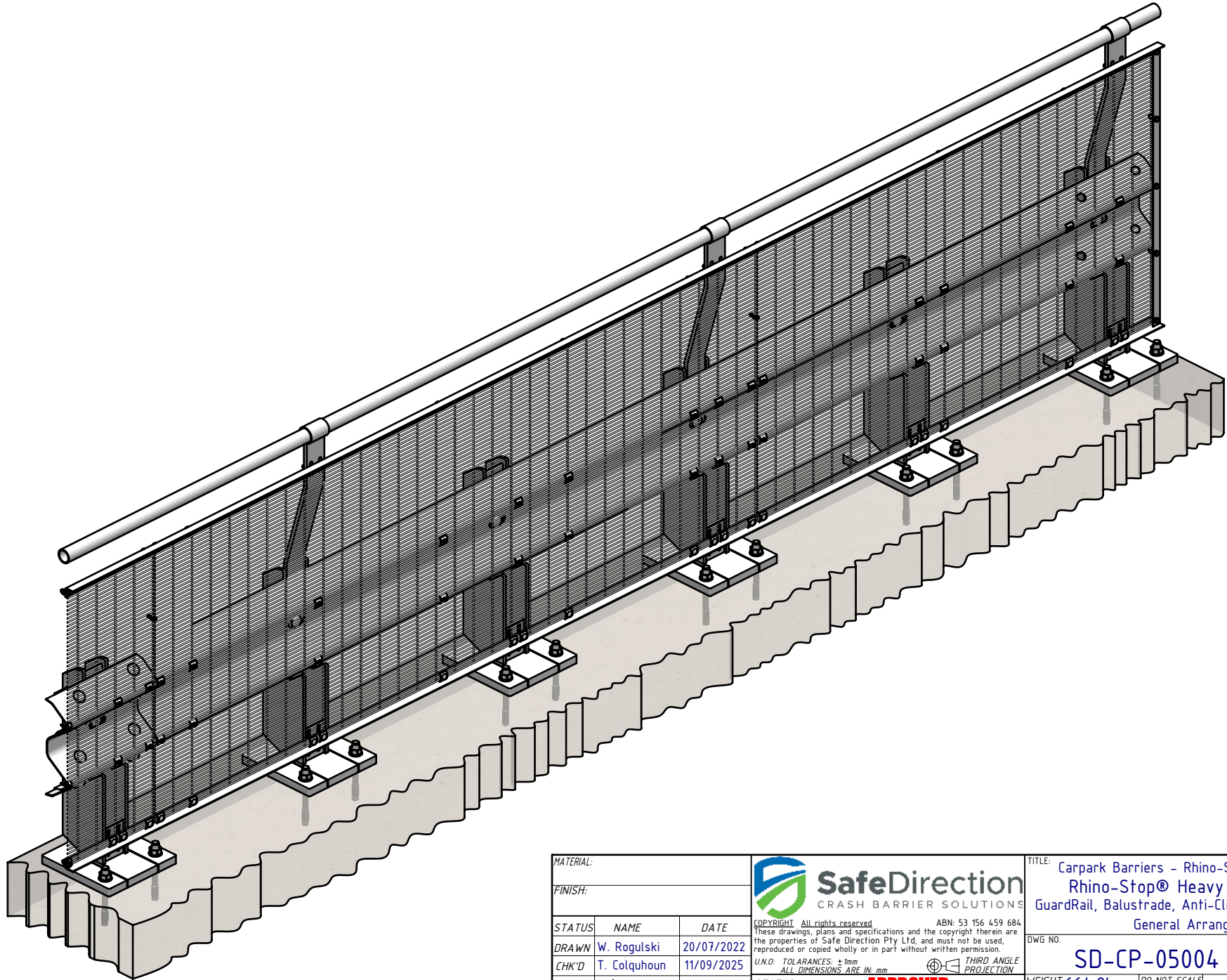
THIRD ANGLE PROJECTION

APPROVED

TITLE: Carpark Barriers - Rhino-Stop® Heavy Duty Type 4 GuardRail, Balustrade, Anti-Climb Mesh & Sight Rail General Arrangement		REVISION:	SHEET SIZE:
DWG NO. SD-CP-05004	REVISION: C	SHEET SIZE: A4	
WEIGHT: 664.2kg	DO NOT SCALE DRAWING	SCALE: 1:10	SHEET 4 of 5

Rhino-Stop® Heavy Duty has been assessed to the 240kN impact load as described in AS/NZS 1170.1 clause 3.8 a) ii) for Light Traffic Areas, based on:

- Post spacing at Maximum 0.8 mtrs Centres
- Minimum 6 Post Assembly per Installation



MATERIAL:		
FINISH:		
STATUS	NAME	DATE
DRAWN	W. Rogulski	20/07/2022
CHK'D	T. Colquhoun	11/09/2025
APPV'D	H. Wallace	11/09/2025

SafeDirection
CRASH BARRIER SOLUTIONS

COPYRIGHT All rights reserved. ABN: 53 156 459 684
These drawings, plans and specifications and the copyright therein are the properties of Safe Direction Pty Ltd, and must not be used, reproduced or copied wholly or in part without written permission.

U.N.O. TOLERANCES: ±1mm
ALL DIMENSIONS ARE IN: mm

THIRD ANGLE PROJECTION

APPROVED

TITLE: Carpark Barriers - Rhino-Stop® Heavy Duty Rhino-Stop® Heavy Duty Type 4 GuardRail, Balustrade, Anti-Climb Mesh & Sight Rail General Arrangement			
DWG NO.	REVISION:	SHEET SIZE	
SD-CP-05004	C	A4	
WEIGHT: 664.2kg	DO NOT SCALE DRAWING	SCALE: 1:15	SHEET 5 of 5