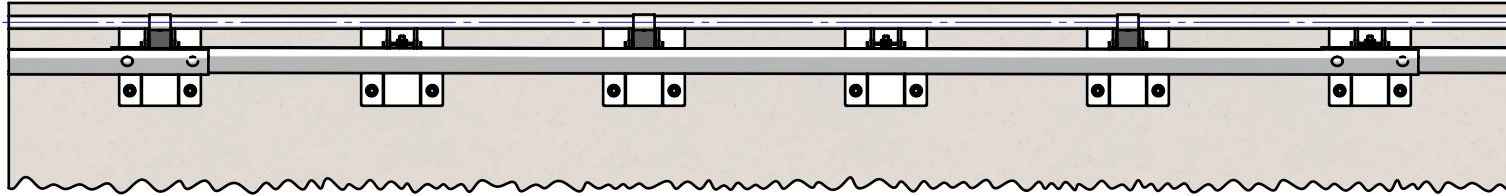


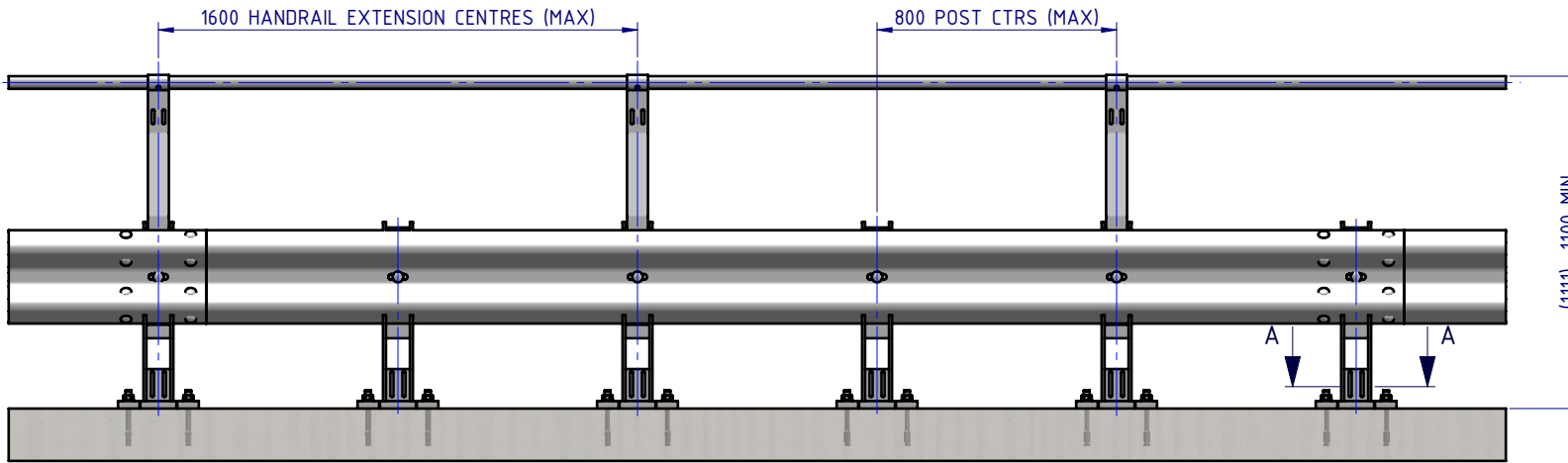
Rhino-Stop® Heavy Duty has been assessed to the 240kN impact load as described in AS/NZS 1170.1 clause 3.8 a) ii) for Light Traffic Areas, based on:

- Post spacing at Maximum 0.8 mtrs Centres
- Minimum 6 Post Assembly per Installation

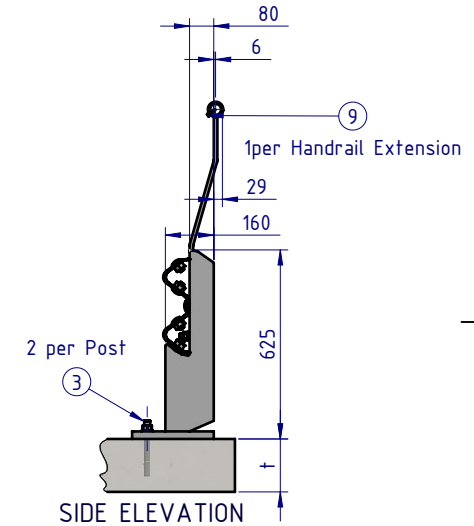
REV.		ZONE	DESCRIPTION	DATE	APPV'D
A			Original Issue, supersedes GR-WB-171	20/07/2022	HW
B			Rhino-Stop Heavy Duty Post revision, updated	27/06/2025	HW



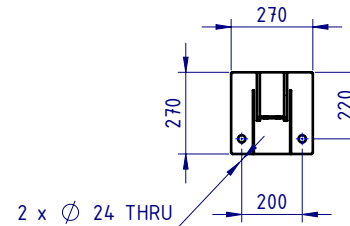
PLAN VIEW



FRONT ELEVATION



SIDE ELEVATION



SECTION A-A
BASE PLATE
DETAIL

BOM			
ITEM NO.	PART NUMBER	DESCRIPTION	Weight kg
1	GR-PB-IS-0625-DG	Rhino-Stop® Heavy Duty Post	25.6
2	GR-MX-MX-0800-AG	Handrail Extension Type 4	5.3
3	GR-FS-20-0187-HG	FISCHER FBN II, M20x187mm	0.5
4	GR-WB-SR-4000-GG	W-Beam Guardrail 4.0m NLL, 0.8m CTRS	43.3
5	HR-PI-32-6500-AG	Handrail / Sight Rail Pipe 32NB	20.1
6	GR-FS-16-0045-HG	M16x45 Hex Head Bolt & Nut Assy	0.0
7	GR-FS-16-0032-MG	M16x32 Mushroom Head SPLICE Bolt & Oversize Nut Assy CL8.8	0.2
8	GR-FS-16-0050-MG	M16x50 Mushroom Head POST Bolt & Oversize Nut Assy Class 4.6	0.2
9	GR-FS-14-0025-TG	14g x 25mm Hex Head Screw Self Tapping, 10 tpi, Class5, B8 Coating	

MATERIAL:		
FINISH:		
STATUS	NAME	DATE
DRAWN	W. Rogulski	20/07/2022
CHK'D	T. Colquhoun	11/09/2025
APPV'D	H. Wallace	11/09/2025

SafeDirection
CRASH BARRIER SOLUTIONS

COPYRIGHT All rights reserved. These drawings, plans and specifications and the copyright therein are the properties of Safe Direction Pty Ltd, and must not be used, reproduced or copied wholly or in part without written permission.

U.N.O. TOLERANCES: ±1mm ALL DIMENSIONS ARE IN: mm

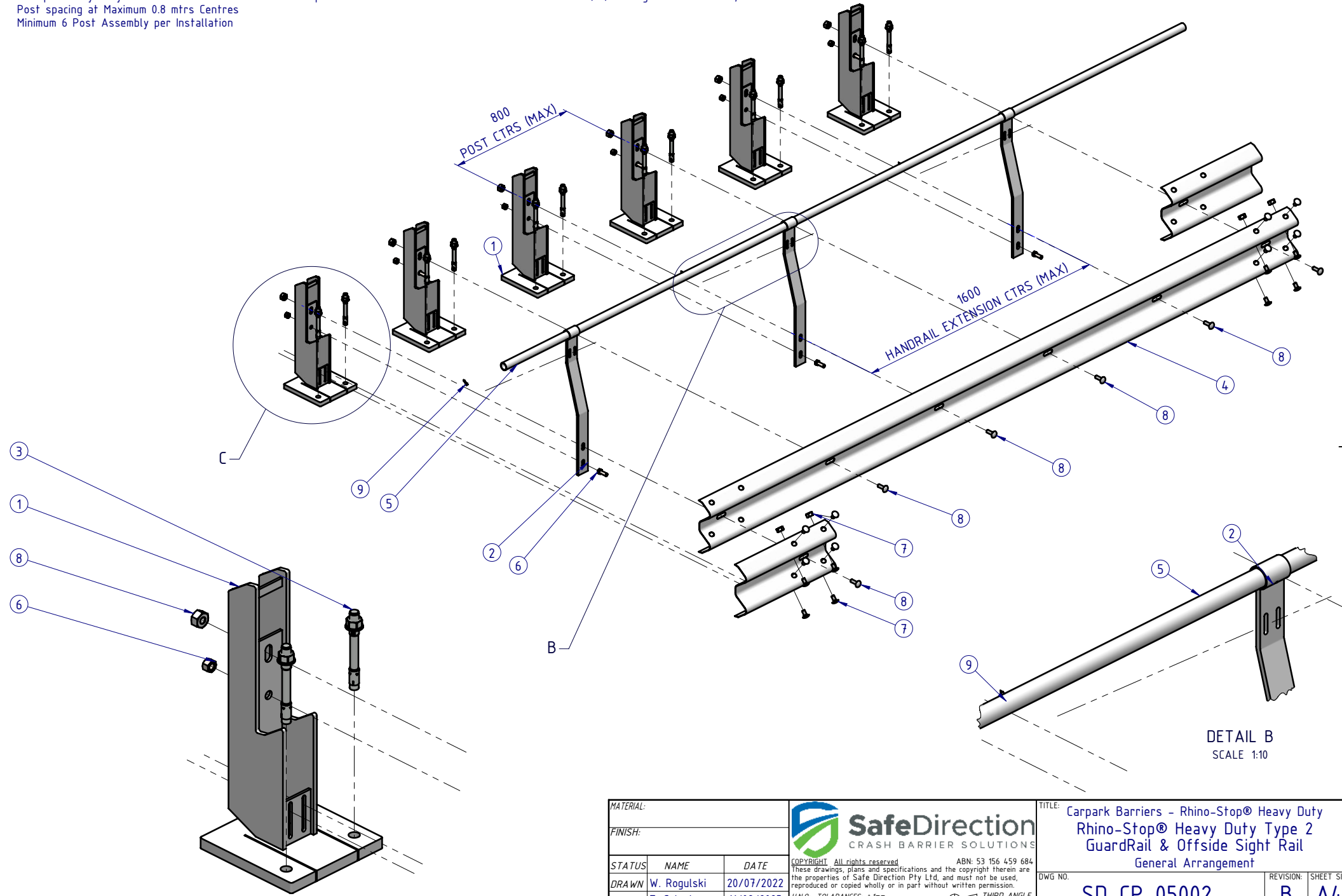
APPROVED

Post Anchor Bolt Installation Details	
Min. Slab Thickness (t)	≥ 150mm
Min. Concrete Strength	32MPa
Anchor Bolt Part #	GR-FS-20-0187-HG
Anchor Bolt Type	Fischer FBN II Mechanical
Drill Type	Masonry Bit
Drill Diameter	Ø20mm
Min. Drill Hole Depth	115mm
Anchor Torque	200Nm

TITLE: Carpark Barriers - Rhino-Stop® Heavy Duty Rhino-Stop® Heavy Duty Type 2 GuardRail & Offside Sight Rail General Arrangement			
DWG NO.	SD-CP-05002	REVISION:	SHEET SIZE
		B	A4
WEIGHT: 780.9kg	DO NOT SCALE DRAWING	SCALE: 1:25	SHEET 1 of 3


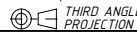
Rhino-Stop® Heavy Duty has been assessed to the 240kN impact load as described in AS/NZS 1170.1 clause 3.8 a) ii) for Light Traffic Areas, based on:

- Post spacing at Maximum 0.8 mtrs Centres
- Minimum 6 Post Assembly per Installation



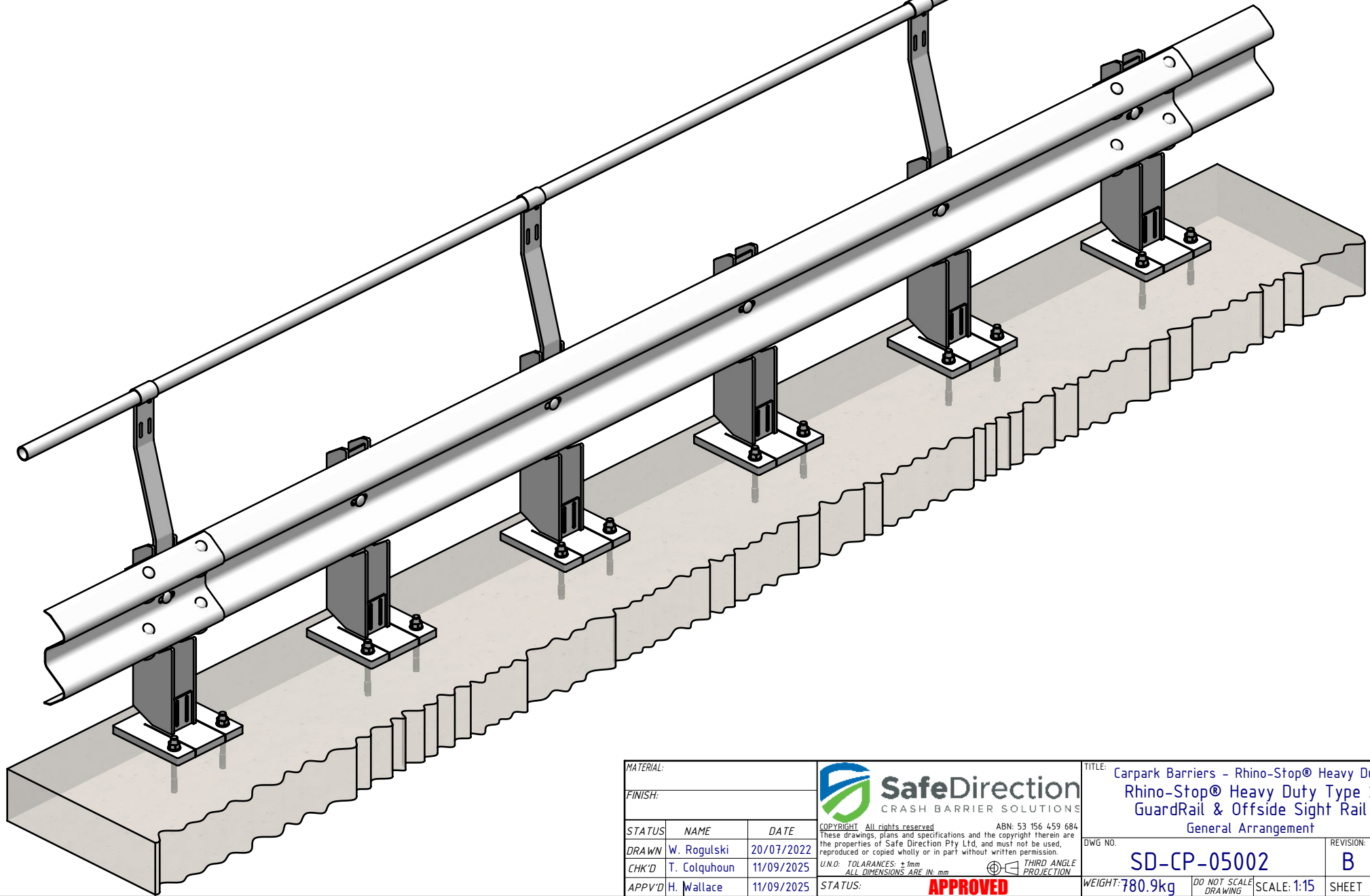
DETAIL C
SCALE 1:10


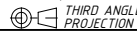
DETAIL B
SCALE 1:10

MATERIAL:			 SafeDirection CRASH BARRIER SOLUTIONS	TITLE: Carpark Barriers - Rhino-Stop® Heavy Duty Rhino-Stop® Heavy Duty Type 2 GuardRail & Offside Sight Rail General Arrangement			
FINISH:				<small> COPYRIGHT: All rights reserved. ABN: 53 156 459 684 These drawings, plans and specifications and the copyright therein are the properties of Safe Direction Pty Ltd, and must not be used, reproduced or copied wholly or in part without written permission. </small>			
STATUS	NAME	DATE	<small> U.N.O: TOLERANCES: ±1mm ALL DIMENSIONS ARE IN: mm </small>	<small> DWG NO. </small>	<small> REVISION: </small>	<small> SHEET SIZE </small>	
DRAWN	W. Rogulski	20/07/2022	 APPROVED	SD-CP-05002		B	A4
CHK'D	T. Colquhoun	11/09/2025		<small> WEIGHT: 780.9kg </small>	<small> DO NOT SCALE DRAWING </small>	<small> SCALE: 1:25 </small>	<small> SHEET 2 of 3 </small>
APPV'D	H. Wallace	11/09/2025		<small> STATUS: </small>	<small> TITLE: Carpark Barriers - Rhino-Stop® Heavy Duty Rhino-Stop® Heavy Duty Type 2 GuardRail & Offside Sight Rail General Arrangement </small>		

Rhino-Stop® Heavy Duty has been assessed to the 240kN impact load as described in AS/NZS 1170.1 clause 3.8 a) iii) for Light Traffic Areas, based on:

- Post spacing at Maximum 0.8 mtrs Centres
- Minimum 6 Post Assembly per Installation



MATERIAL:			 SafeDirection CRASH BARRIER SOLUTIONS	TITLE: Carpark Barriers - Rhino-Stop® Heavy Duty Rhino-Stop® Heavy Duty Type 2 GuardRail & Offside Sight Rail General Arrangement		
FINISH:				<small> COPYRIGHT: All rights reserved. ABN: 53 156 459 684 These drawings, plans and specifications and the copyright therein are the properties of Safe Direction Pty Ltd, and must not be used, reproduced or copied wholly or in part without written permission. </small>		
STATUS	NAME	DATE	<small> U.N.O: TOLERANCES: ±1mm ALL DIMENSIONS ARE IN: mm </small>  THIRD ANGLE PROJECTION	DWG NO.	REVISION:	SHEET SIZE
DRAWN	W. Rogulski	20/07/2022		SD-CP-05002	B	A4
CHK'D	T. Colquhoun	11/09/2025				
APPV'D	H. Wallace	11/09/2025				
STATUS: APPROVED			WEIGHT: 780.9kg	<small>DO NOT SCALE DRAWING</small>	SCALE: 1:15	SHEET 3 of 3