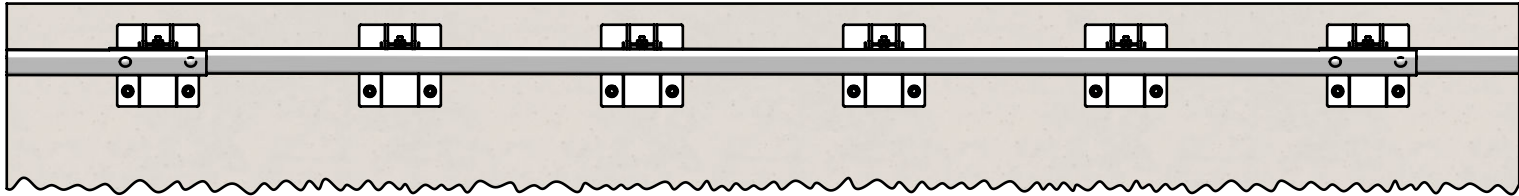


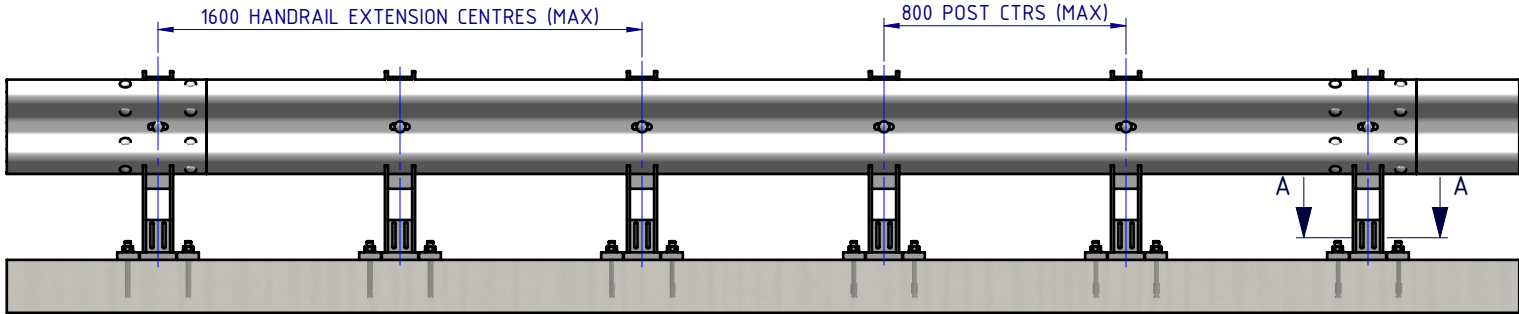
Rhino-Stop® Heavy Duty has been assessed to the 240kN impact load as described in AS/NZS 1170.1 clause 3.8 a) ii) for Light Traffic Areas, based on:

- Post spacing at Maximum 0.8 mtrs Centres
- Minimum 6 Post Assembly per Installation

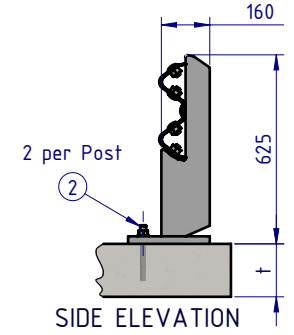
REVISIONS				
REV.	ZONE	DESCRIPTION	DATE	APPV'D
A		Original Issue, supersedes GR-WB-170	20/07/2022	HW
B		Rhino-Stop Heavy Duty Post revision, updated	27/06/2025	HW



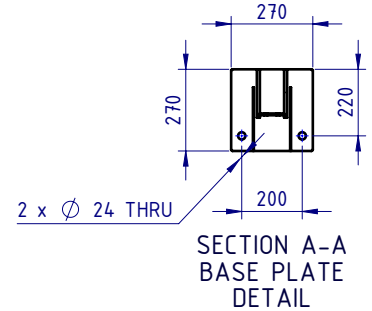
PLAN VIEW



FRONT ELEVATION



SIDE ELEVATION



SECTION A-A  
BASE PLATE  
DETAIL

Post Anchor Bolt Installation Details	
Min. Slab Thickness (t)	≥ 150mm
Min. Concrete Strength	32MPa
Anchor Bolt Part #	GR-FS-20-0187-HG
Anchor Bolt Type	Fischer FBN II Mechanical
Drill Type	Masonry Bit
Drill Diameter	Ø20mm
Min. Drill Hole Depth	115mm
Anchor Torque	200Nm

BOM			
ITEM NO.	PART NUMBER	DESCRIPTION	Weight kg
1	GR-PB-IS-0625-DG	Rhino-Stop® Heavy Duty Post	25.6
2	GR-FS-20-0187-HG	FISCHER FBN II, M20x187mm	0.5
3	GR-WB-SR-4000-GG	W-Beam Guardrail 4.0m NLL, 0.8m CTRS	43.3
4	GR-FS-16-0032-MG	M16x32 Mushroom Head SPLICE Bolt & Oversize Nut Assy CL8.8	0.2
5	GR-FS-16-0050-MG	M16x50 Mushroom Head POST Bolt & Oversize Nut Assy Class 4.6	0.2

MATERIAL:		
FINISH:		
STATUS	NAME	DATE
DRAWN	W. Rogulski	20/07/2022
CHK'D	T. Colquhoun	11/09/2025
APPV'D	H. Wallace	11/09/2025

**SafeDirection**  
CRASH BARRIER SOLUTIONS

COPYRIGHT: All rights reserved. These drawings, plans and specifications and the copyright therein are the properties of Safe Direction Pty Ltd, and must not be used, reproduced or copied wholly or in part without written permission.

ABN: 53 156 459 684  
U.N.O. TOLERANCES: ±1mm ALL DIMENSIONS ARE IN: mm

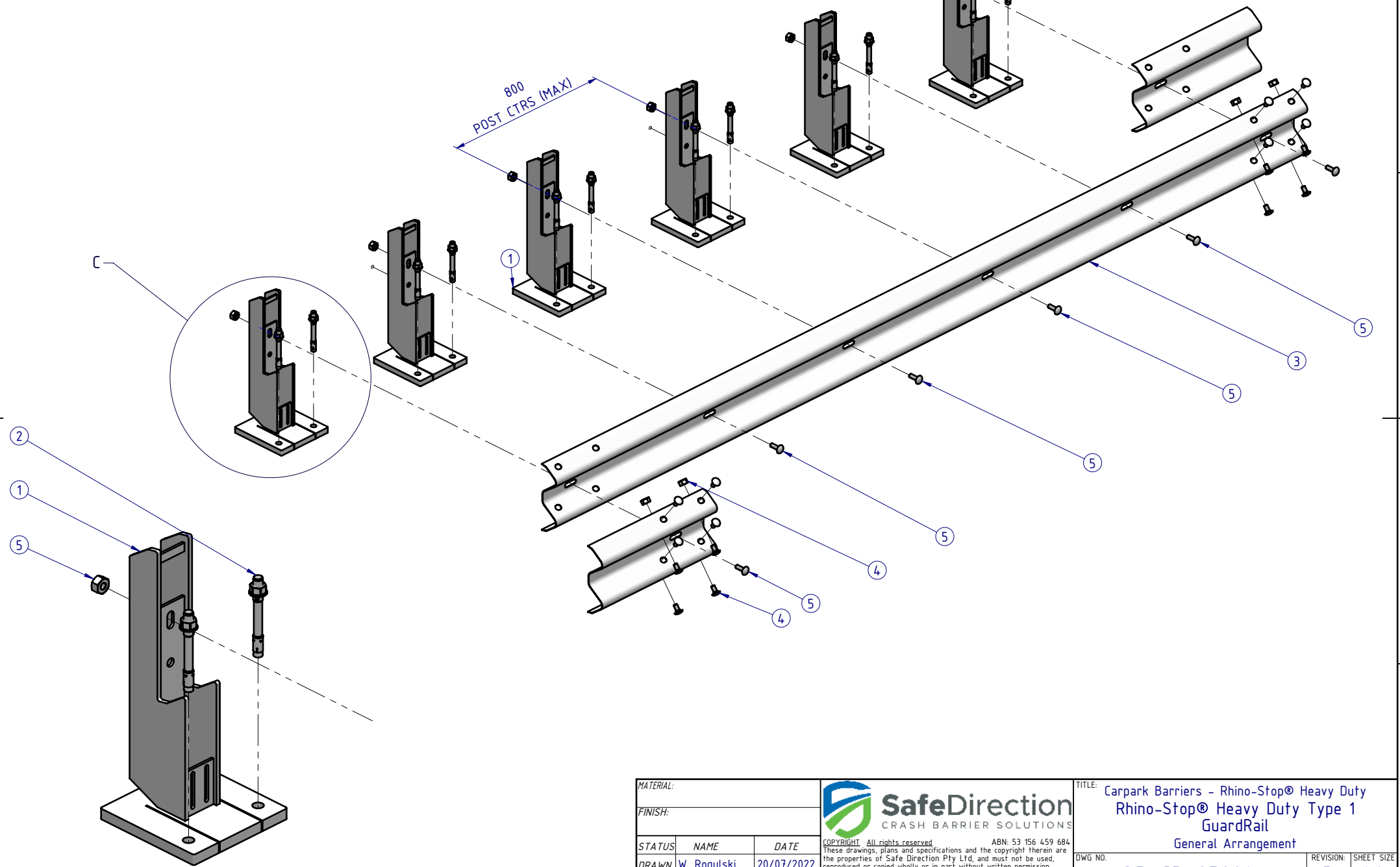
THIRD ANGLE PROJECTION

**APPROVED**


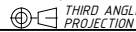
TITLE: Carpark Barriers - Rhino-Stop® Heavy Duty Rhino-Stop® Heavy Duty Type 1 GuardRail General Arrangement			
DWG NO.	REVISION:	SHEET SIZE	
<b>SD-CP-05001</b>	<b>B</b>	<b>A4</b>	
WEIGHT: 909.5kg	DO NOT SCALE DRAWING	SCALE: 1:25	SHEET 1 of 3

Rhino-Stop® Heavy Duty has been assessed to the 240kN impact load as described in AS/NZS 1170.1 clause 3.8 a) ii) for Light Traffic Areas, based on:

- Post spacing at Maximum 0.8 mtrs Centres
- Minimum 6 Post Assembly per Installation

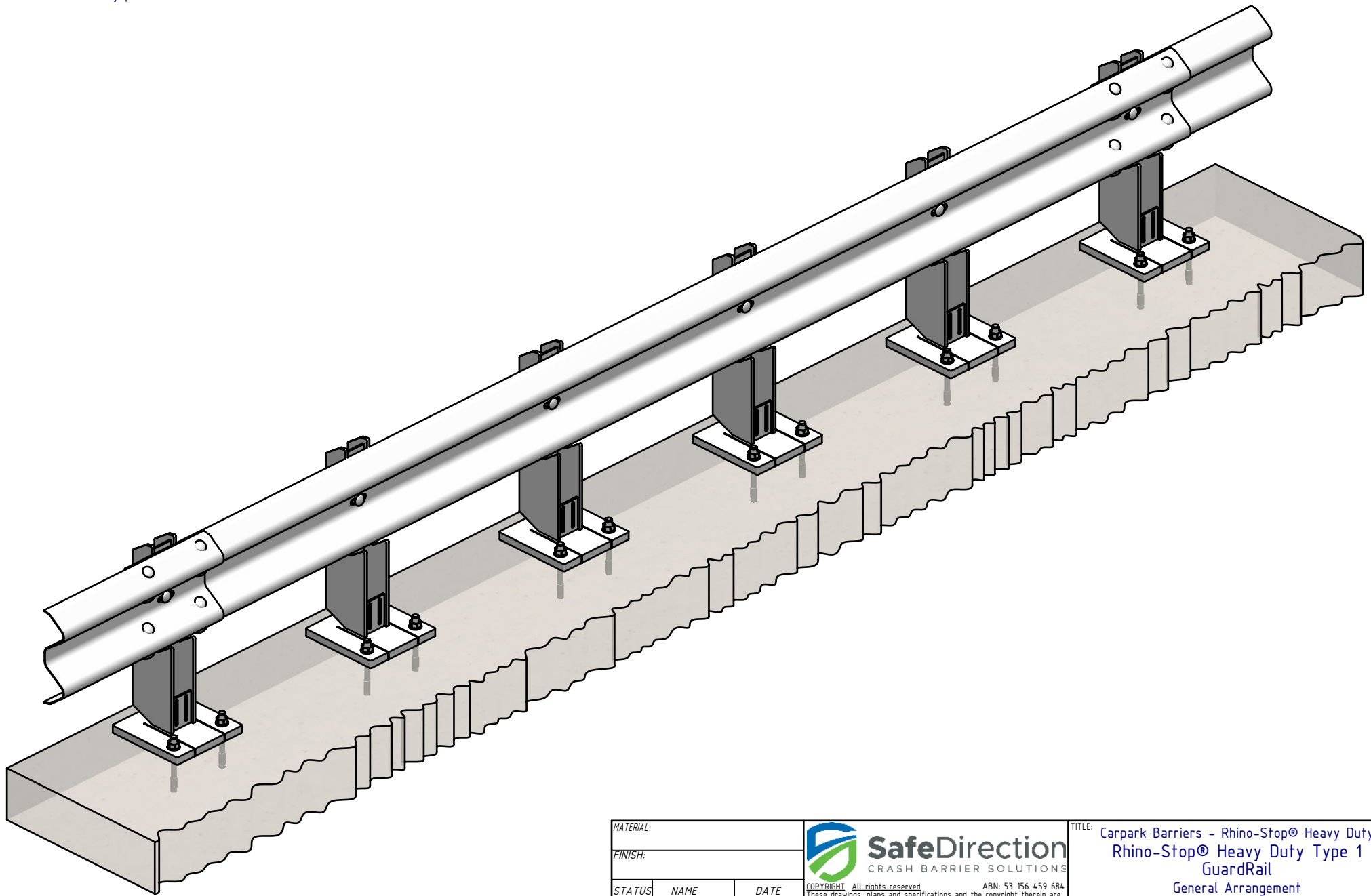



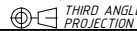
DETAIL C  
SCALE 1:10

MATERIAL:			 <b>SafeDirection</b> CRASH BARRIER SOLUTIONS		TITLE: Carpark Barriers - Rhino-Stop® Heavy Duty Rhino-Stop® Heavy Duty Type 1 GuardRail General Arrangement				
FINISH:					<small>COPYRIGHT All rights reserved ABN: 53 156 459 684          These drawings, plans and specifications and the copyright therein are the properties of Safe Direction Pty Ltd, and must not be used, reproduced or copied wholly or in part without written permission.</small>		DWG NO:	REVISION:	SHEET SIZE
STATUS	NAME	DATE	<small>U.N.O: TOLERANCES: ±1mm          ALL DIMENSIONS ARE IN: mm</small>  THIRD ANGLE PROJECTION		SD-CP-05001				
DRAWN	W. Rogulski	20/07/2022			WEIGHT: 909.5kg		DO NOT SCALE DRAWING	SCALE: 1:20	SHEET 2 of 3
CHK'D	T. Colquhoun	11/09/2025			STATUS: <b>APPROVED</b>				
APPV'D	H. Wallace	11/09/2025							

Rhino-Stop® Heavy Duty has been assessed to the 240kN impact load as described in AS/NZS 1170.1 clause 3.8 a) iii) for Light Traffic Areas, based on:

- Post spacing at Maximum 0.8 mtrs Centres
- Minimum 6 Post Assembly per Installation



MATERIAL:			 <b>SafeDirection</b> CRASH BARRIER SOLUTIONS		TITLE: Carpark Barriers - Rhino-Stop® Heavy Duty Rhino-Stop® Heavy Duty Type 1 GuardRail General Arrangement				
FINISH:					<small>COPYRIGHT: All rights reserved. ABN: 53 156 459 684          These drawings, plans and specifications and the copyright therein are the properties of Safe Direction Pty Ltd, and must not be used, reproduced or copied wholly or in part without written permission.</small>		DWG NO.	REVISION:	SHEET SIZE
STATUS	NAME	DATE	<small>U.N.O: TOLARANCES: ±1mm          ALL DIMENSIONS ARE IN: mm</small>  THIRD ANGLE PROJECTION		SD-CP-05001		B	A4	
DRAWN	W. Rogulski	20/07/2022			WEIGHT: 909.5kg		DO NOT SCALE DRAWING	SCALE: 1:15	SHEET 3 of 3
CHK'D	T. Colquhoun	11/09/2025			STATUS: <b>APPROVED</b>				
APPV'D	H. Wallace	11/09/2025							