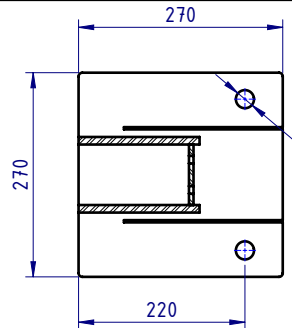
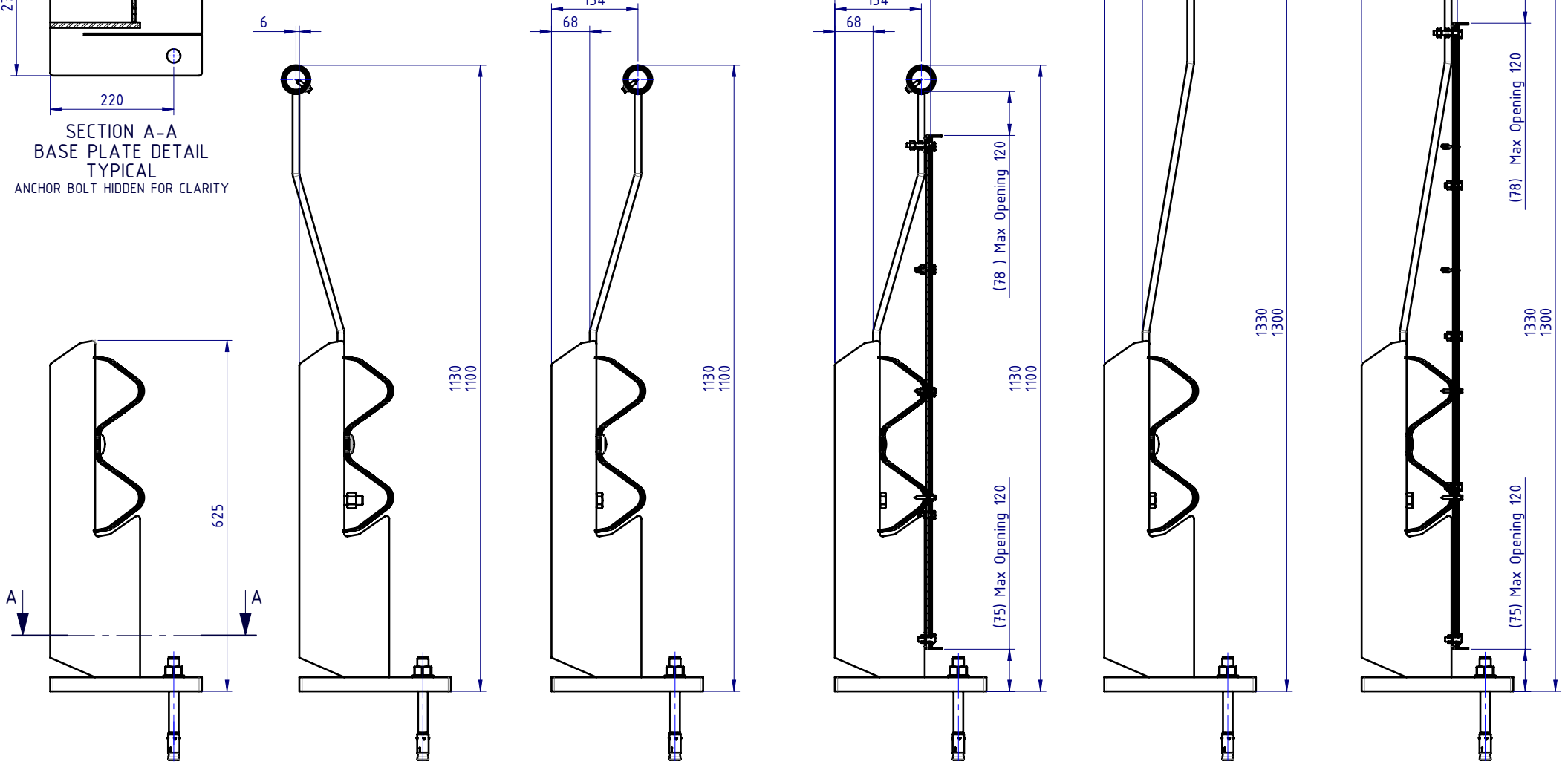


Rhino-Stop® Heavy Duty has been assessed to the 240kN impact load as described in AS/NZS 1170.1 clause 3.8 a) ii) for Light Traffic Areas, based on:

- Post spacing at Maximum 0.8 mtrs Centres
- Minimum 6 Post Assembly per Installation



SECTION A-A  
BASE PLATE DETAIL  
TYPICAL  
ANCHOR BOLT HIDDEN FOR CLARITY



Rhino-Stop® Heavy Duty Type 1 GuardRail  
 Rhino-Stop® Heavy Duty Type 2 GuardRail & Offside Sight Rail  
 Rhino-Stop® Heavy Duty Type 3 GuardRail & Sight Rail  
 Rhino-Stop® Heavy Duty Type 4 GuardRail, Balustrade, Anti-Climb Mesh & Sight Rail  
 Rhino-Stop® Heavy Duty Type 5 GuardRail & Sight Rail  
 Rhino-Stop® Heavy Duty Type 6 GuardRail, Balustrade, Anti-Climb Mesh & Sight Rail

| REVISIONS |      |  |            |        |
|-----------|------|--|------------|--------|
| REV.      | ZONE | DESCRIPTION                                  | DATE       | APP'VD |
| A         |      | Original Issue, supersedes GR-WB-076         | 20/07/2022 | HW     |
| B         |      | Rhino-Stop Heavy Duty Post, revision updated | 27/06/2025 | HW     |

|           |              |            |
|-----------|--------------|------------|
| MATERIAL: |              |            |
| FINISH:   |              |            |
| STATUS    | NAME         | DATE       |
| DRAWN     | W. Refahi    | 20/07/2022 |
| CHK'D     | T. Colquhoun | 11/09/2025 |
| APP'VD    | H. Wallace   | 11/09/2025 |

**SafeDirection**  
CRASH BARRIER SOLUTIONS

COPYRIGHT: All rights reserved. ABN: 53 156 459 684  
 These drawings, plans and specifications and the copyright therein are the properties of Safe Direction Pty Ltd, and must not be used, reproduced or copied wholly or in part without written permission.

U.N.O. TOLERANCES: ±1mm  
 ALL DIMENSIONS ARE IN: mm

**THIRD ANGLE PROJECTION**

**APPROVED**

|  |             |              |  |
|--|-------------|--------------|--|
| TITLE: Carpark Barriers - Rhino-Stop® Heavy Duty<br>Rhino-Stop® Heavy Duty<br>GuardRail<br>General Arrangement |             |              |  |
| DWG NO.  | REVISION:   | SHEET SIZE   |  |
| <b>SD-CP-05000</b>   | <b>B</b>    | <b>A4</b>    |  |
| WEIGHT: 909.5kg  | SCALE: 1:10 | SHEET 1 of 1 |  |