

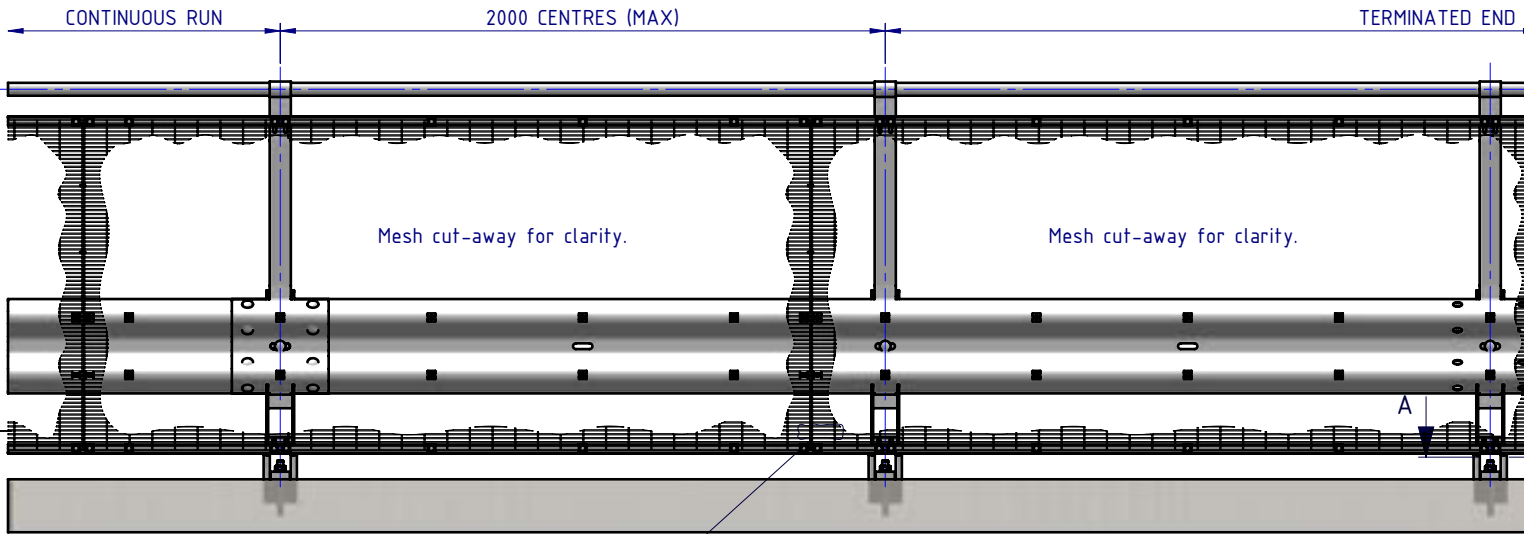
Rhino-Stop has been assessed to exceed the 30kN impact load as described in AS/NZS 1170.1 clause 3.8 a) i) for Light Traffic Areas, based on:

- Post spacing at Maximum 2 mtrs Centres
- Minimum 3 Post Assembly per Installation

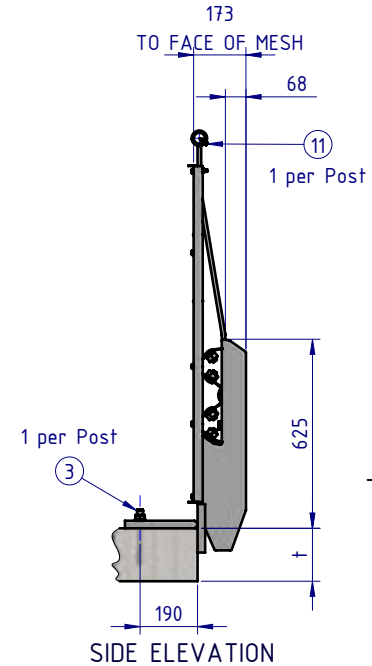
REVISIONS				
REV.	ZONE	DESCRIPTION	DATE	APPV'D
A		Original Issue, supersedes GR-WB-035	04/05/2022	HW



PLAN VIEW

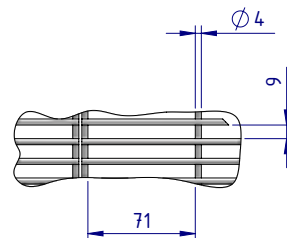


FRONT ELEVATION

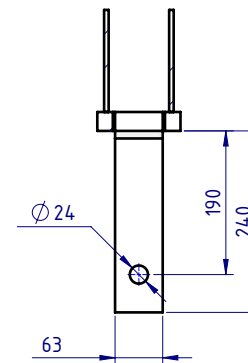


SIDE ELEVATION

BOM			
ITEM NO.	PART NUMBER	Description	Weight kg
1	GR-PB-IS-0700-AG	Rhino-Stop® Sky Edge Post	13.7
2	GR-MX-MX-1010-AG	Handrail Extension Type 6	6.6
3	GR-FS-20-0187-HG	FISCHER FBN II, M20x187mm	0.5
4	GR-WB-SR-4000-CG	W-Beam Guardrail 4.0M NLL, 1.0M CTRS	43.3
5	GR-EA-30-6000-BG	Mesh Support Angle	6.6
6	HR-PI-32-6500-AG	Handrail / Sight Rail Pipe 32NB	20.1
7	GR-MX-MX-2411-AG	Mesh Infill Panel 2400x1100, Ø4 wire, 71x9 aperture	4.4
8	GR-FS-16-0045-HG	M16x45 Hex Head Bolt & Nut Assy	0.0
9	GR-FS-16-0032-MG	M16x32 Mushroom Head SPLICE Bolt & Oversize Nut Assy CL8.8	0.2
10	GR-FS-16-0050-MG	M16x50 Mushroom Head POST Bolt & Nut Assy Class 4.6	0.2
11	GR-FS-14-0025-TG	14g x 25mm Hex Head Screw Self Tapping, 10 tpi, Class5, B8 Coating	0.0
12	GR-FS-08-0040-MG	M8x40 Mushroom Head Bolt & Nut Assy Class 4.6 HDG	0.0
13	GR-FS-08-0025-MG	M8x25 Mushroom Head Bolt & Nut Assy CL4.6 HDG	0.0
14	GR-FS-08-0000-AG	M8 Square Hole Mesh Washer	0.0
15	GR-FS-12-0035-TG	12g x 35mm Hex Head Screw Self Tapping, 10 tpi, Class5, B8 Coating	0.0
16	GR-EA-30-6000-BG	Mesh Support Angle	1.2
17	GE-FS-08-0025-HG	M8x25 Hex Head Screw Class 8.8 B Coating	
18	GE-FS-08-0000-HG	M8 Hex Nut Class5 B-Coating	



DETAIL B MESH DETAIL
SCALE 1:5



SECTION A-A
BASE PLATE DETAIL
SCALE 1:10

Post Anchor Bolt Installation Details		
Slab Thickness (t)	≤ 170mm	> 170mm
Anchor Bolt Part #	GR-FS-20-0160-HG	GR-FS-20-0187-HG
Anchor Bolt Type	Fischer FBN II Mechanical	Fischer FBN II Mechanical
Min. Embedment Depth	100mm	130mm
Drill Type	Masonry Bit	Masonry Bit
Drill diameter	Ø20mm	Ø20mm
Drill Depth	105mm	135mm
Minimum Torque	200Nm	200Nm

MATERIAL:
FINISH:

SafeDirection
CRASH BARRIER SOLUTIONS

COPYRIGHT All rights reserved. ABN: 53 156 459 684
These drawings, plans and specifications and the copyright therein are the properties of Safe Direction Pty Ltd, and must not be used, reproduced or copied wholly or in part without written permission.

STATUS	NAME	DATE
DRAWN	W. Rogulski	21/04/2022
CHK'D	T. Colquhoun	04/05/2022
APPV'D	H. Wallace	04/05/2022

U.N.O. TOLERANCES: ±1mm ALL DIMENSIONS ARE IN: mm

THIRD ANGLE PROJECTION

APPROVED

TITLE: Carpark Barriers - RhinoStop® Sky-Edge Rhino-Stop® Sky-Edge Type 6 GuardRail, Balustrade, Anti-Climb Mesh & Sight Rail General Arrangement

DWG NO: **SD-CP-02006** REVISION: **A** SHEET SIZE: **A4**

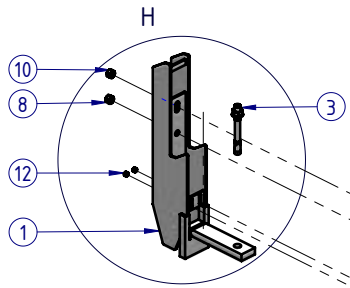
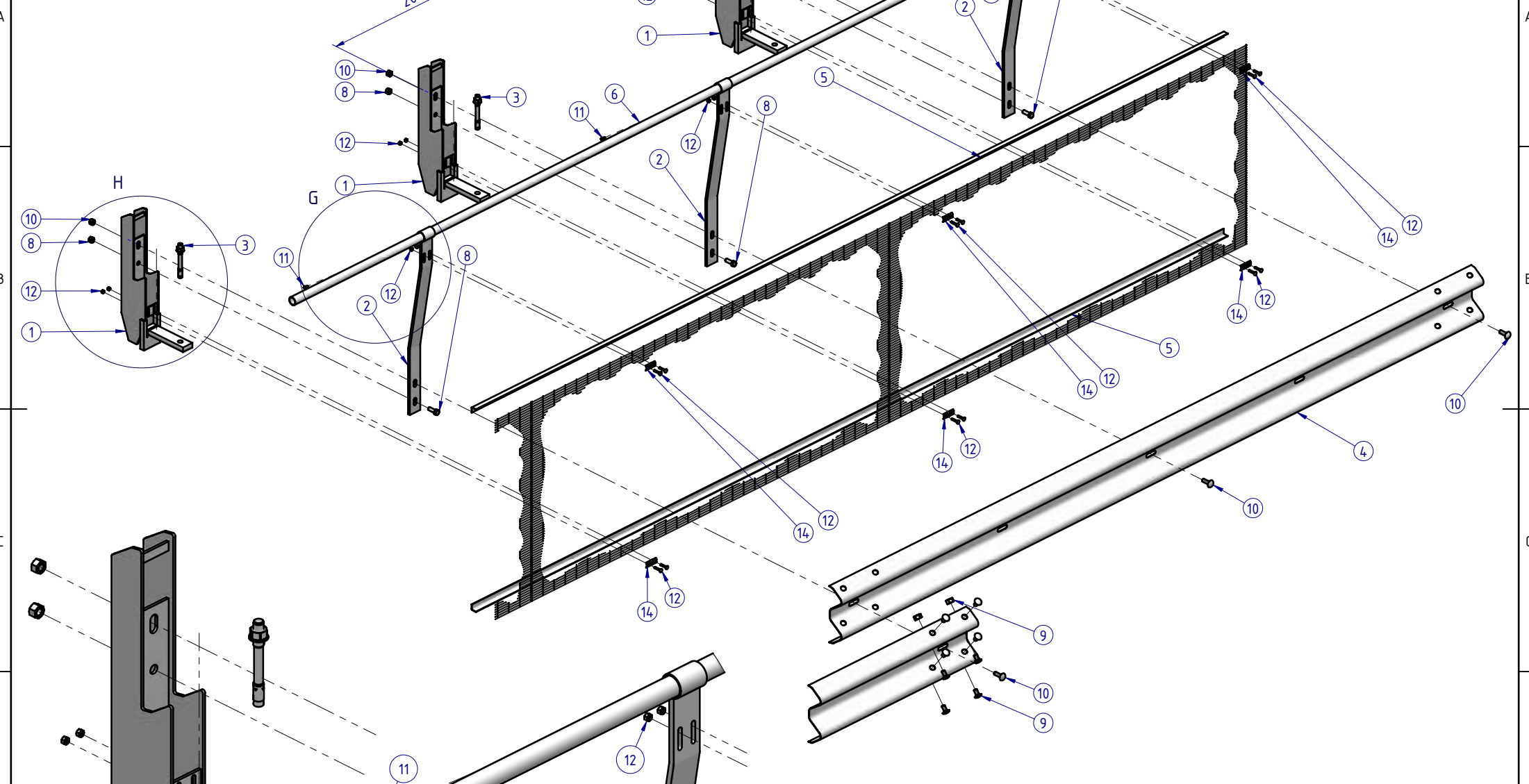
WEIGHT: **450.1kg** DO NOT SCALE DRAWING SCALE: **1:25** SHEET **1** of **5**

Thursday, 5 May 2022 12:49:39 PM

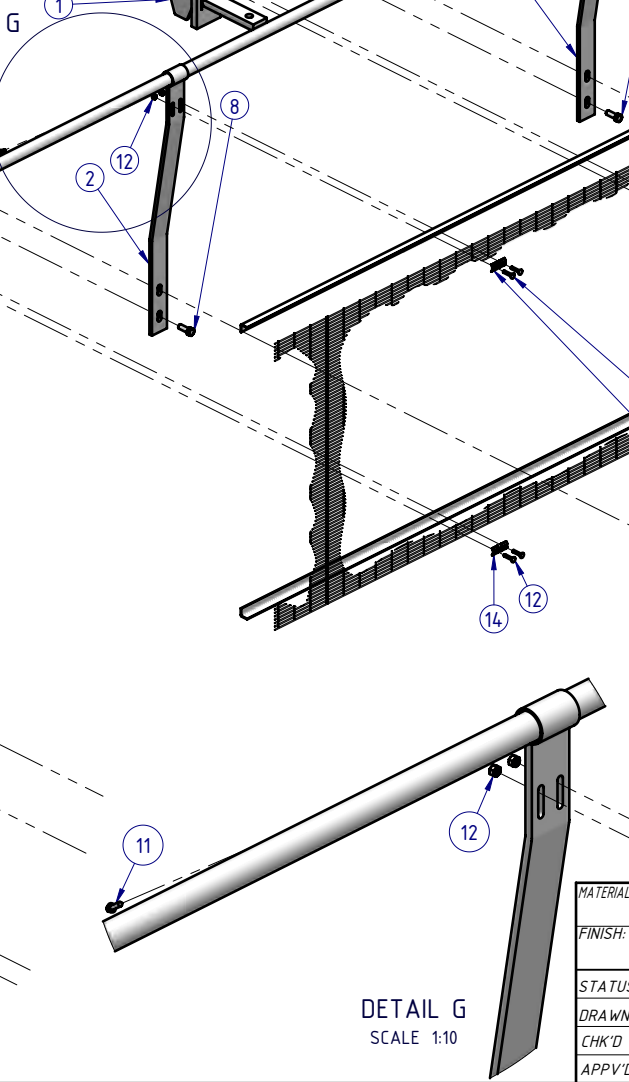
Rhino-Stop has been assessed to exceed the 30kN impact load as described in AS/NZS 1170.1 clause 3.8 a) i) for Light Traffic Areas, based on:

- Post spacing at Maximum 2 mtrs Centres
- Minimum 3 Post Assembly per Installation


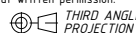

2000 POST CENTRES (MAX)



DETAIL H
SCALE 1:10

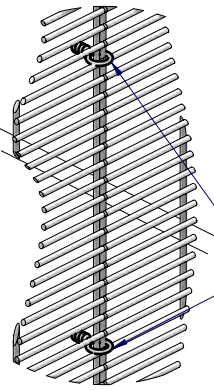
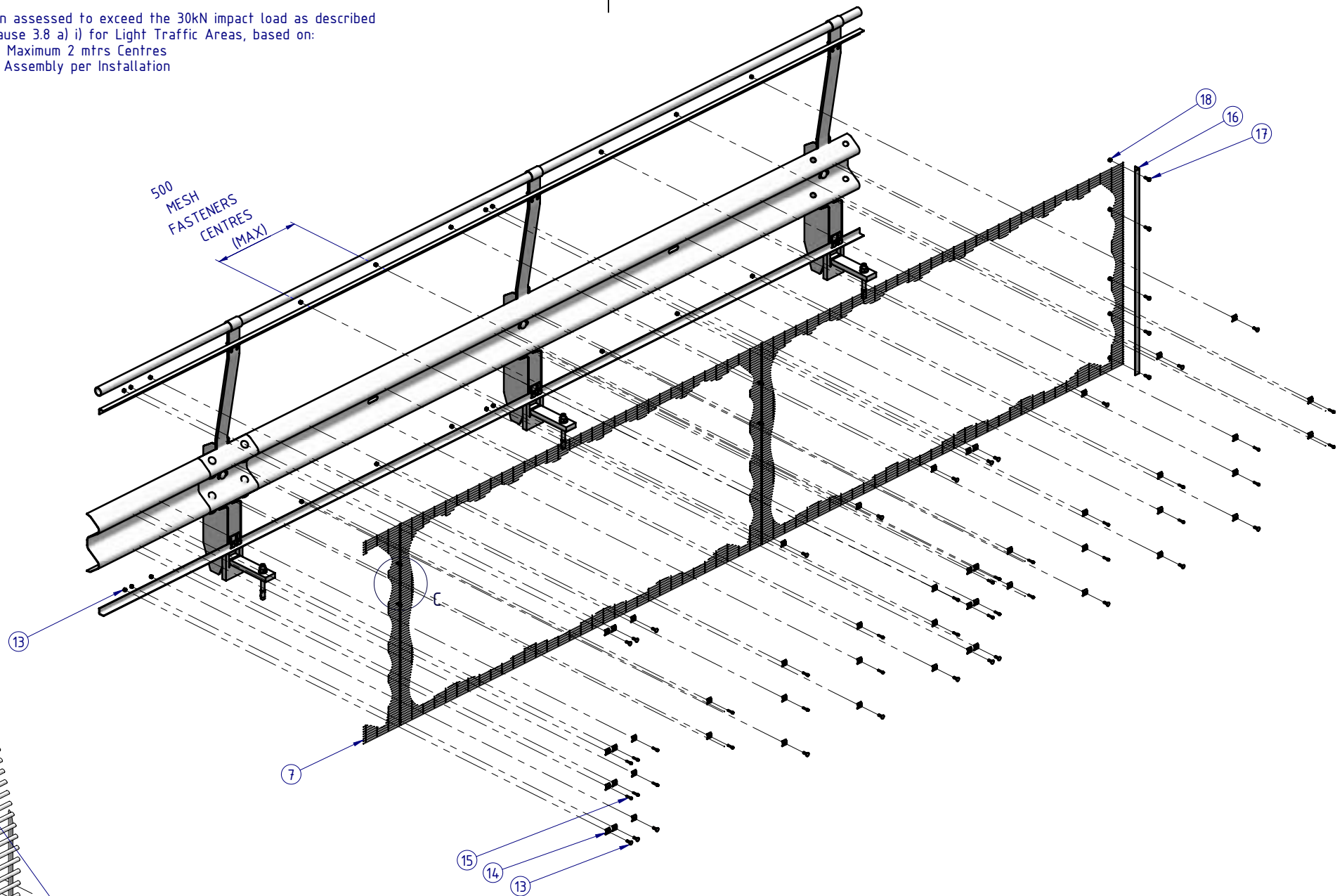


DETAIL G
SCALE 1:10

MATERIAL:			 SafeDirection CRASH BARRIER SOLUTIONS		TITLE: Carpark Barriers - RhinoStop® Sky-Edge Rhino-Stop® Sky-Edge Type 6 GuardRail, Balustrade, Anti-Climb Mesh & Sight Rail General Arrangement					
FINISH:					<small>COPYRIGHT All rights reserved. ABN: 53 156 459 684 These drawings, plans and specifications and the copyright therein are the properties of Safe Direction Pty Ltd, and must not be used, reproduced or copied wholly or in part without written permission.</small>		DWG NO. SD-CP-02006	REVISION: A	SHEET SIZE: A4	
STATUS	NAME	DATE	<small>U.N.O. TOLERANCES: ±1mm ALL DIMENSIONS ARE IN: mm</small>				WEIGHT: 450.1kg	DO NOT SCALE DRAWING	SCALE: 1:25	SHEET 2 of 5
DRAWN	W. Rogulski	21/04/2022			<small>THURSDAY, 5 MAY 2022 12:49:39 PM</small>					
CHK'D	T. Colquhoun	04/05/2022	<small>C:\SDSYD\301\Assembly\SD-CP Carpark Barriers\SD-CP-02000 RhinoStop Sky-Edge\SD-CP-02006 - RhinoStop Sky-Edge Type 6</small>							
APPV'D	H. Wallace	04/05/2022	<small>STATUS:</small>							


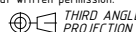
Rhino-Stop has been assessed to exceed the 30kN impact load as described in AS/NZS 1170.1 clause 3.8 a) i) for Light Traffic Areas, based on:

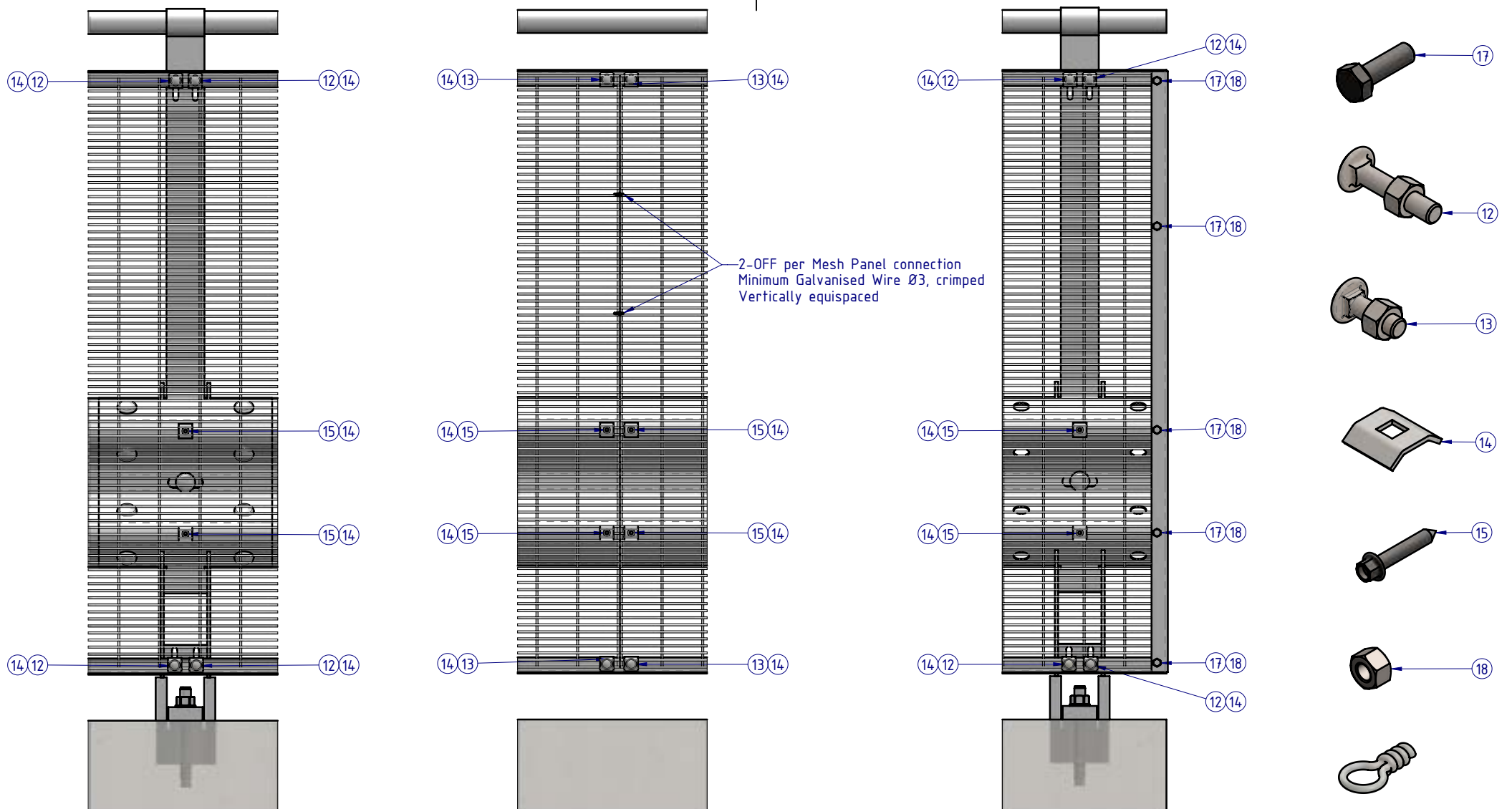
- Post spacing at Maximum 2 mtrs Centres
- Minimum 3 Post Assembly per Installation



2-OFF to be installed at every Mesh Panel connection
Minimum Galvanised Wire Ø3, crimped
Vertically equispaced

DETAIL C
SCALE 1:5

MATERIAL:			 SafeDirection CRASH BARRIER SOLUTIONS		TITLE: Carpark Barriers - RhinoStop® Sky-Edge Rhino-Stop® Sky-Edge Type 6 GuardRail, Balustrade, Anti-Climb Mesh & Sight Rail General Arrangement				
FINISH:					<small>COPYRIGHT All rights reserved ABN: 53 156 459 684 These drawings, plans and specifications and the copyright therein are the properties of Safe Direction Pty Ltd, and must not be used, reproduced or copied wholly or in part without written permission.</small>		DWG NO:	REVISION:	SHEET SIZE:
STATUS	NAME	DATE	<small>U.N.O. TOLERANCES: ±1mm ALL DIMENSIONS ARE IN: mm</small>  THIRD ANGLE PROJECTION		SD-CP-02006		A	A4	
DRAWN	W. Rogulski	21/04/2022			WEIGHT: 450.1kg		DO NOT SCALE DRAWING	SCALE: 1:25	SHEET 3 of 5
CHK'D	T. Colquhoun	04/05/2022			STATUS: APPROVED				
APPV'D	H. Wallace	04/05/2022			<small>\\S05YD030\Assembly\SD-CP Carpark Barriers\SD-CP-02000 RhinoStop Sky-Edge\SD-CP-02006 - RhinoStop Sky-Edge Type 6</small>				



DETAIL D
AT POST CONNECTION

DETAIL E
MESH PANEL CONNECTION

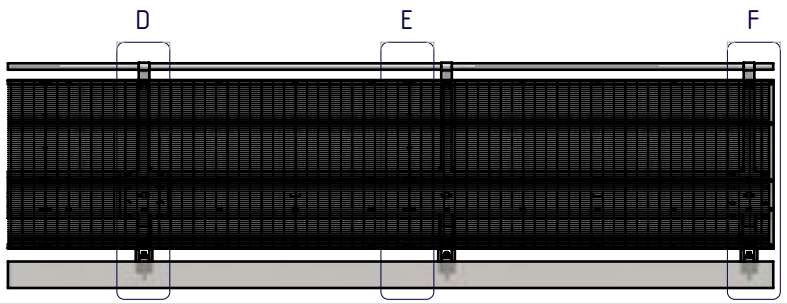
DETAIL F
TERMINATION CONNECTION

MESH PANEL CONNECTION DETAILS

ALL FASTENERS TO BE USED AS SHOWN
ACCORDING TO CONNECTION TYPE

Rhino-Stop has been assessed to exceed the 30kN impact load as described in AS/NZS 1170.1 clause 3.8 a) i) for Light Traffic Areas, based on:

- Post spacing at Maximum 2 mtrs Centres
- Minimum 3 Post Assembly per Installation



MATERIAL:		
FINISH:		
STATUS	NAME	DATE
DRAWN	W. Rogulski	21/04/2022
CHK'D	T. Colquhoun	04/05/2022
APPV'D	H. Wallace	04/05/2022

SafeDirection
CRASH BARRIER SOLUTIONS

COPYRIGHT All rights reserved. ABN: 53 156 459 684
These drawings, plans and specifications and the copyright therein are the properties of Safe Direction Pty Ltd, and must not be used, reproduced or copied wholly or in part without written permission.

U.N.O. TOLERANCES: ±1mm
ALL DIMENSIONS ARE IN: mm

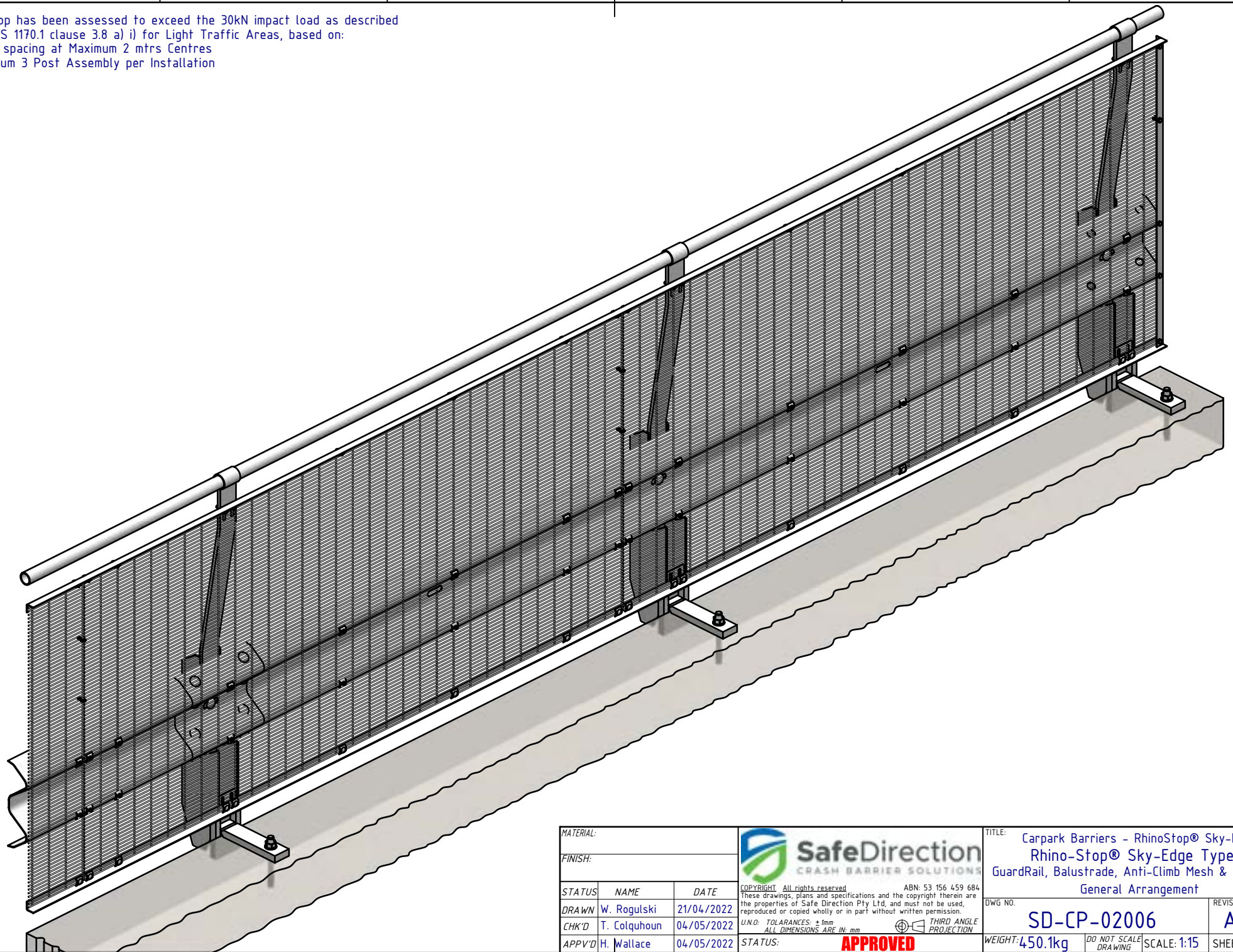
APPROVED


THIRD ANGLE PROJECTION

TITLE: Carpark Barriers - RhinoStop® Sky-Edge Rhino-Stop® Sky-Edge Type 6 GuardRail, Balustrade, Anti-Climb Mesh & Sight Rail General Arrangement		
DWG NO. SD-CP-02006	REVISION: A	SHEET SIZE: A4
WEIGHT: 450.1kg	SCALE: 1:10	SHEET 4 of 5

Rhino-Stop has been assessed to exceed the 30kN impact load as described in AS/NZS 1170.1 clause 3.8 a) i) for Light Traffic Areas, based on:

- Post spacing at Maximum 2 mtrs Centres
- Minimum 3 Post Assembly per Installation



MATERIAL:			 SafeDirection CRASH BARRIER SOLUTIONS		TITLE: Carpark Barriers - RhinoStop® Sky-Edge Rhino-Stop® Sky-Edge Type 6 GuardRail, Balustrade, Anti-Climb Mesh & Sight Rail General Arrangement							
FINISH:					<small>COPYRIGHT All rights reserved ABN: 53 156 459 684</small> <small>These drawings, plans and specifications and the copyright therein are the properties of Safe Direction Pty Ltd, and must not be used, reproduced or copied wholly or in part without written permission.</small>		DWG NO:	REVISION:	SHEET SIZE			
STATUS	NAME	DATE	<small>U.N.O. TOLERANCES: ±1mm</small> <small>ALL DIMENSIONS ARE IN: mm</small>		SD-CP-02006			A	A4			
DRAWN	W. Rogulski	21/04/2022			<small>THIRD ANGLE PROJECTION</small>		WEIGHT: 450.1kg		DO NOT SCALE DRAWING	SCALE: 1:15	SHEET 5 of 5	
CHK'D	T. Colquhoun	04/05/2022					STATUS: APPROVED					
APPV'D	H. Wallace	04/05/2022										