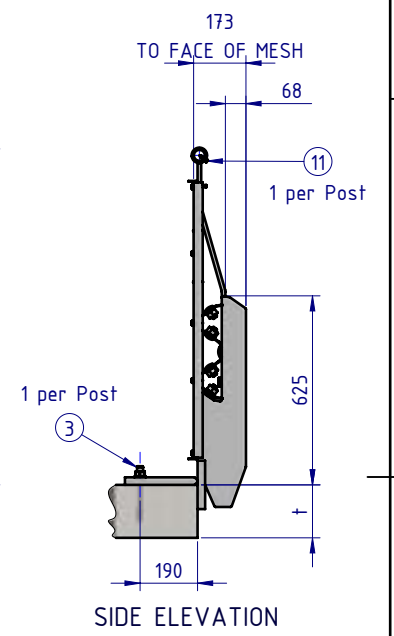
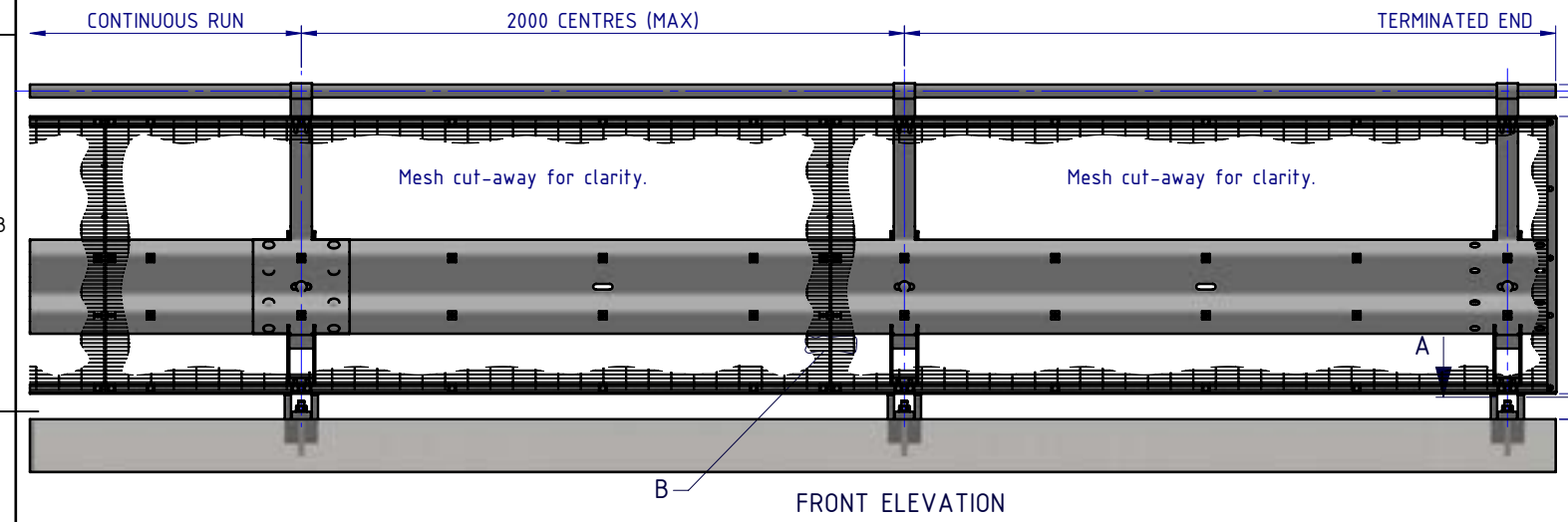
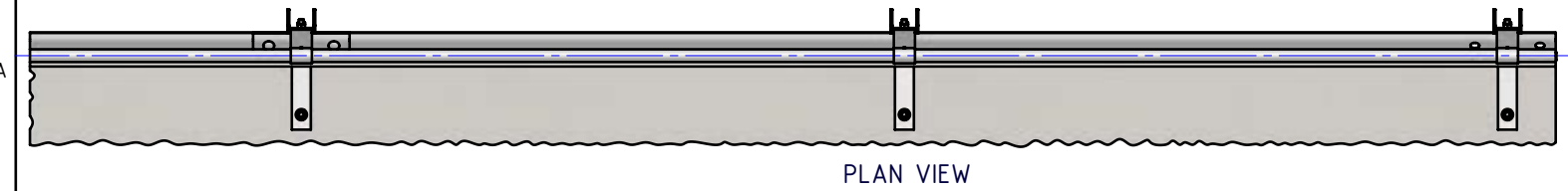


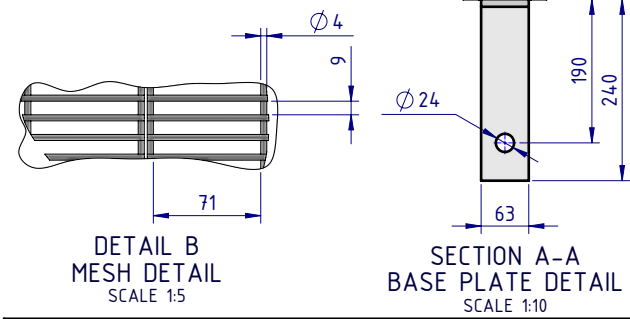
Rhino-Stop has been assessed to exceed the 30kN impact load as described in AS/NZS 1170.1 clause 3.8 a) i) for Light Traffic Areas, based on:

- Post spacing at Maximum 2 mtrs Centres
- Minimum 3 Post Assembly per Installation

REVISIONS				
REV.	ZONE	DESCRIPTION	DATE	APPV'D
A		Original Issue, supersedes GR-WB-033	04/05/2022	HW



BOM			
ITEM NO.	PART NUMBER	Description	Weight kg
1	GR-PB-IS-0700-AG	Rhino-Stop® Sky Edge Post	13.7
2	GR-MX-MX-0800-AG	Handrail Extension Type 4	5.3
3	GR-FS-20-0187-HG	FISCHER FBN II, M20x187mm	0.5
4	GR-WB-SR-4000-CG	W-Beam Guardrail 4.0M NLL, 1.0M CTRS	43.3
5	GR-EA-30-6000-BG	Mesh Support Angle	6.6
6	HR-PI-32-6500-AG	Handrail / Sight Rail Pipe 32NB	20.1
7	GR-MX-MX-2409-AG	Mesh Infill Panel 2400x900, Ø4 wire, 71x9 aparture	4.0
8	GR-FS-16-0045-HG	M16x45 Hex Head Bolt & Nut Assy	0.0
9	GR-FS-16-0032-MG	M16x32 Mushroom Head SPLICE Bolt & Oversize Nut Assy CL8.8	0.2
10	GR-FS-16-0050-MG	M16x50 Mushroom Head POST Bolt & Nut Assy Class 4.6	0.2
11	GR-FS-14-0025-TG	14g x 25mm Hex Head Screw Self Tapping, 10 tpi, Class5, B8 Coating	
12	GR-FS-08-0040-MG	M8x40 Mushroom Head Bolt & Nut Assy Class 4.6 HDG	0.0
13	GR-FS-08-0025-MG	M8x25 Mushroom Head Bolt & Nut Assy CL4.6 HDG	0.0
14	GR-FS-08-0000-AG	M8 Square Hole Mesh Washer	0.0
15	GR-FS-12-0035-TG	12g x 35mm Hex Head Screw Self Tapping, 10 tpi, Class5, B8 Coating	
16	GR-EA-30-6000-BG	Mesh Support Angle	1.0
17	GE-FS-08-0025-HG	M8x25 Hex Head Screw Class 8.8 B Coating	
18	GE-FS-08-0000-HG	M8 Hex Nut Class5 B-Coating	

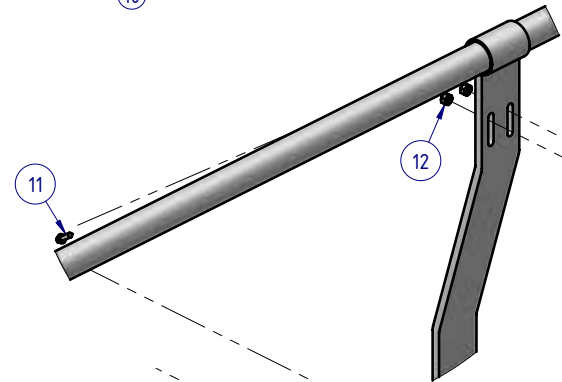
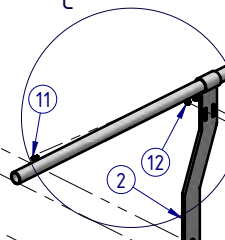
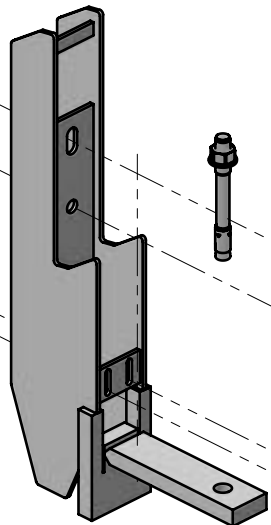
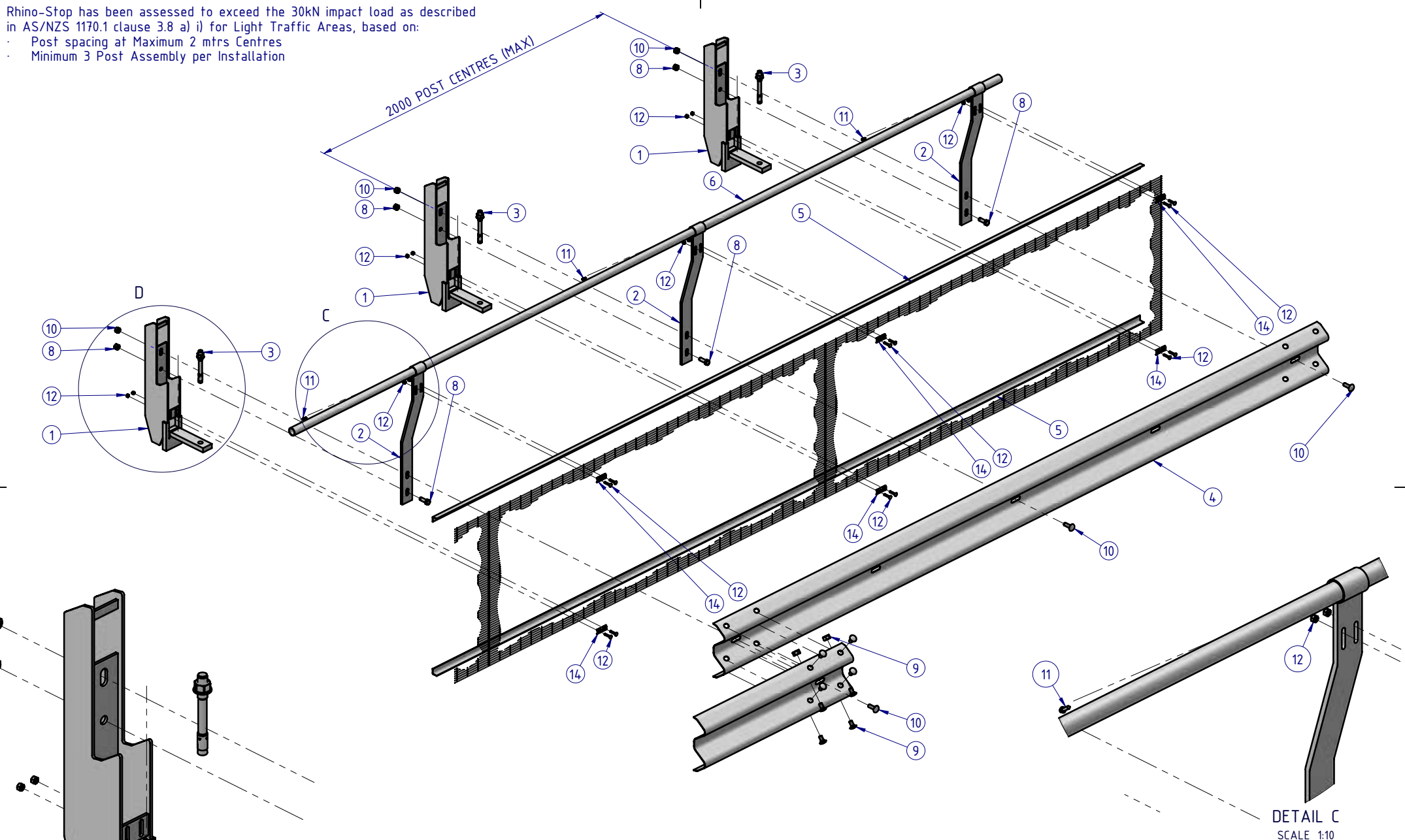


Post Anchor Bolt Installation Details		
Slab Thickness (t)	≤ 170mm	> 170mm
Anchor Bolt Part #	GR-FS-20-0160-HG	GR-FS-20-0187-HG
Anchor Bolt Type	Fischer FBN II Mechanical	Fischer FBN II Mechanical
Min. Embedment Depth	100mm	130mm
Drill Type	Masonry Bit	Masonry Bit
Drill diameter	Ø20mm	Ø20mm
Drill Depth	105mm	135mm
Minimum Torque	200Nm	200Nm

MATERIAL:					TITLE: Carpark Barriers - RhinoStop® Sky-Edge Rhino-Stop® Sky-Edge Type 4 GuardRail, Balustrade & Anti-Climb Mesh General Arrangement															
FINISH:					DWG NO: SD-CP-02004 REVISION: A SHEET SIZE: A4															
<table border="1"> <thead> <tr> <th>STATUS</th> <th>NAME</th> <th>DATE</th> </tr> </thead> <tbody> <tr> <td>DRAWN</td> <td>W. Rogulski</td> <td>21/04/2022</td> </tr> <tr> <td>CHK'D</td> <td>T. Colquhoun</td> <td>04/05/2022</td> </tr> <tr> <td>APPV'D</td> <td>H. Wallace</td> <td>04/05/2022</td> </tr> </tbody> </table>			STATUS	NAME	DATE	DRAWN	W. Rogulski	21/04/2022	CHK'D	T. Colquhoun	04/05/2022	APPV'D	H. Wallace	04/05/2022	COPYRIGHT: All rights reserved. ABN: 53 156 459 684 These drawings, plans and specifications and the copyright therein are the properties of Safe Direction Pty Ltd, and must not be used, reproduced or copied wholly or in part without written permission. U.N.O: TOLERANCES: ±1mm ALL DIMENSIONS ARE IN: mm THIRD ANGLE PROJECTION			WEIGHT: 437.2kg DO NOT SCALE DRAWING SCALE: 1:25 SHEET 1 of 5		
STATUS	NAME	DATE																		
DRAWN	W. Rogulski	21/04/2022																		
CHK'D	T. Colquhoun	04/05/2022																		
APPV'D	H. Wallace	04/05/2022																		
STATUS: <b>APPROVED</b>			Thursday, 5 May 2022 12:34:55 PM																	


Rhino-Stop has been assessed to exceed the 30kN impact load as described in AS/NZS 1170.1 clause 3.8 a) i) for Light Traffic Areas, based on:

- Post spacing at Maximum 2 mtrs Centres
- Minimum 3 Post Assembly per Installation



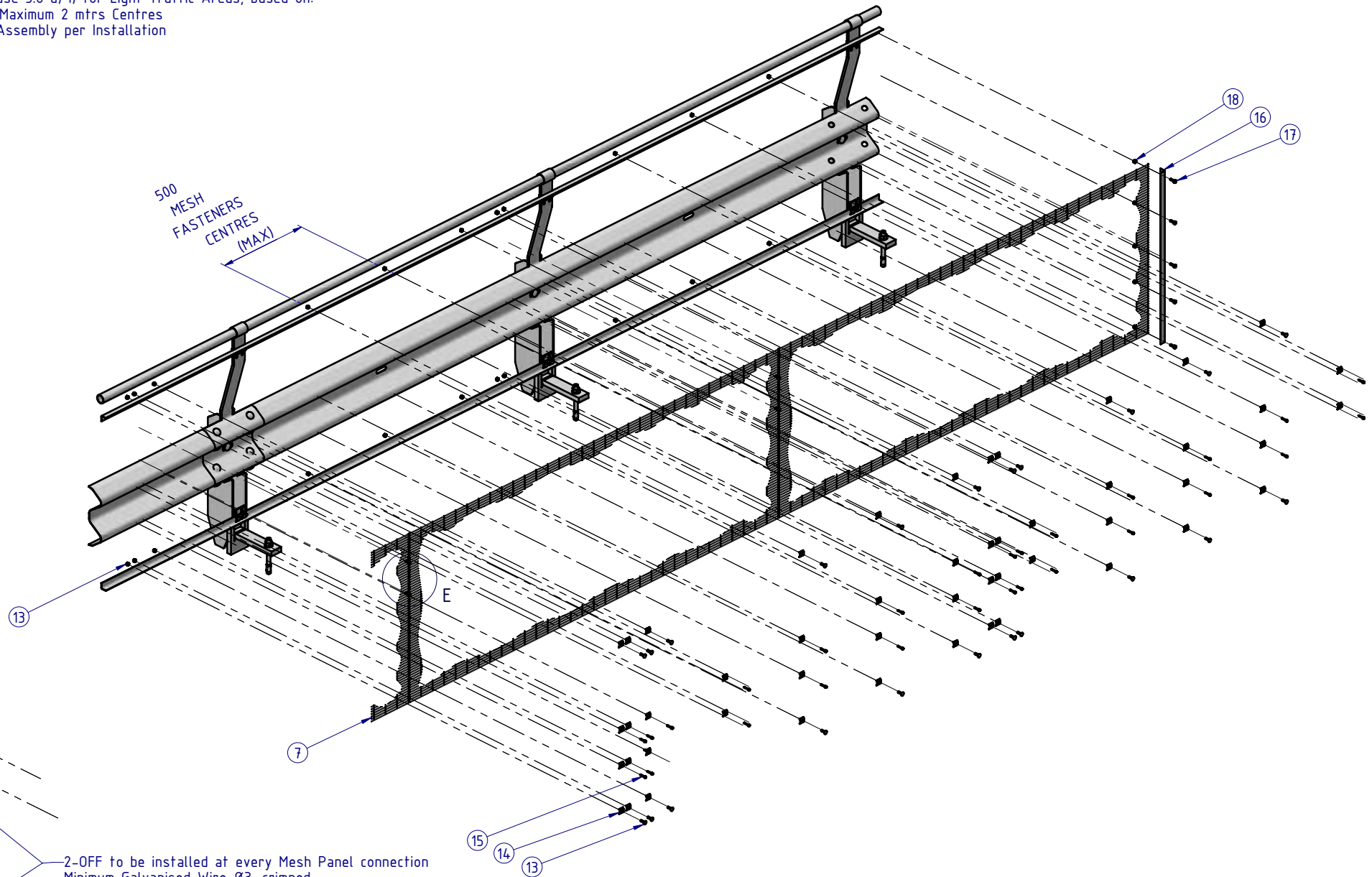
DETAIL D  
SCALE 1:10

DETAIL C  
SCALE 1:10

MATERIAL:			 <b>SafeDirection</b> CRASH BARRIER SOLUTIONS		TITLE: Carpark Barriers - RhinoStop® Sky-Edge Rhino-Stop® Sky-Edge Type 4 GuardRail, Balustrade & Anti-Climb Mesh General Arrangement		
FINISH:					DWG NO. SD-CP-02004		
STATUS	NAME	DATE	<small>COPYRIGHT. All rights reserved. ABN: 53 156 459 684</small> <small>These drawings, plans and specifications and the copyright therein are the properties of Safe Direction Pty Ltd, and must not be used, reproduced or copied wholly or in part without written permission.</small> <small>U.N.O. TOLERANCES: ±1mm</small> <small>ALL DIMENSIONS ARE IN: mm</small>			REVISION:	SHEET SIZE
DRAWN	W. Rogulski	21/04/2022				A	A4
CHK'D	T. Colquhoun	04/05/2022				SCALE: 1:25	
APPV'D	H. Wallace	04/05/2022				SHEET 2 of 5	
STATUS: <b>APPROVED</b>			WEIGHT: 437.2kg	DO NOT SCALE DRAWING	SCALE: 1:25	THURSDAY, 5 MAY 2022 12:34:55 PM	

Rhino-Stop has been assessed to exceed the 30kN impact load as described in AS/NZS 1170.1 clause 3.8 a) i) for Light Traffic Areas, based on:

- Post spacing at Maximum 2 mtrs Centres
- Minimum 3 Post Assembly per Installation



500  
MESH  
FASTENERS  
CENTRES  
(MAX)

13

7

15

14

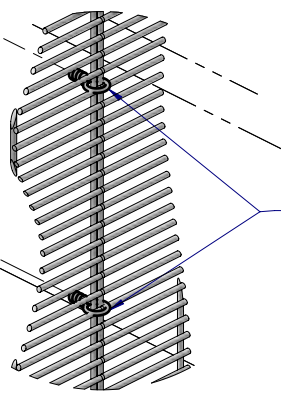
13

18

16


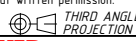
17

E



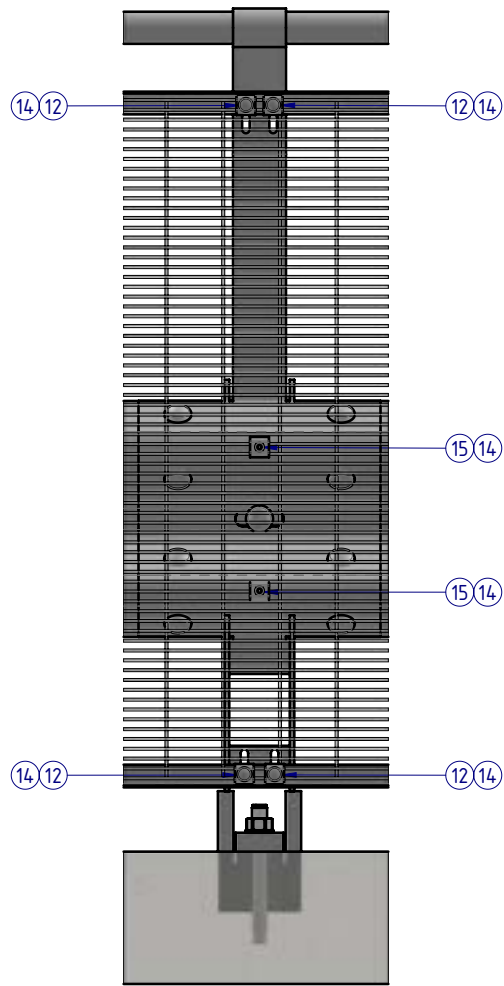
2-OFF to be installed at every Mesh Panel connection  
Minimum Galvanised Wire Ø3, crimped  
Vertically equispaced

DETAIL E  
SCALE 1:5

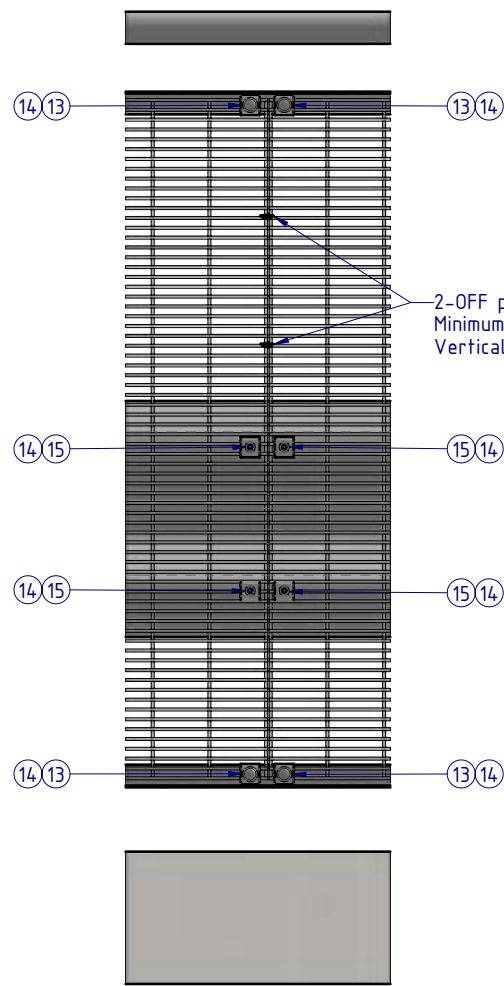
MATERIAL:			 <p><b>SafeDirection</b> CRASH BARRIER SOLUTIONS</p>		TITLE: Carpark Barriers - RhinoStop® Sky-Edge Rhino-Stop® Sky-Edge Type 4 GuardRail, Balustrade & Anti-Climb Mesh General Arrangement				
FINISH:					<small>COPYRIGHT All rights reserved. ABN: 53 156 459 684 These drawings, plans and specifications and the copyright therein are the properties of Safe Direction Pty Ltd, and must not be used, reproduced or copied wholly or in part without written permission.</small>		DWG NO:	REVISION:	SHEET SIZE:
STATUS	NAME	DATE	<small>U.N.O. TOLERANCES: ±1mm ALL DIMENSIONS ARE IN: mm</small> 		SD-CP-02004		A	A4	
DRAWN	W. Rogulski	21/04/2022			WEIGHT: 437.2kg		DO NOT SCALE DRAWING	SCALE: 1:25	SHEET 3 of 5
CHK'D	T. Colquhoun	04/05/2022			STATUS: <b>APPROVED</b>				
APPV'D	H. Wallace	04/05/2022			<small>C:\SDSYD\ASSEMBLY\SD-CP Carpark Barriers\SD-CP-02000 RhinoStop Sky-Edge\SD-CP-02004 - RhinoStop Sky-Edge Type 4</small>				

Rhino-Stop has been assessed to exceed the 30kN impact load as described in AS/NZS 1170.1 clause 3.8 a) i) for Light Traffic Areas, based on:

- Post spacing at Maximum 2 mtrs Centres
- Minimum 3 Post Assembly per Installation

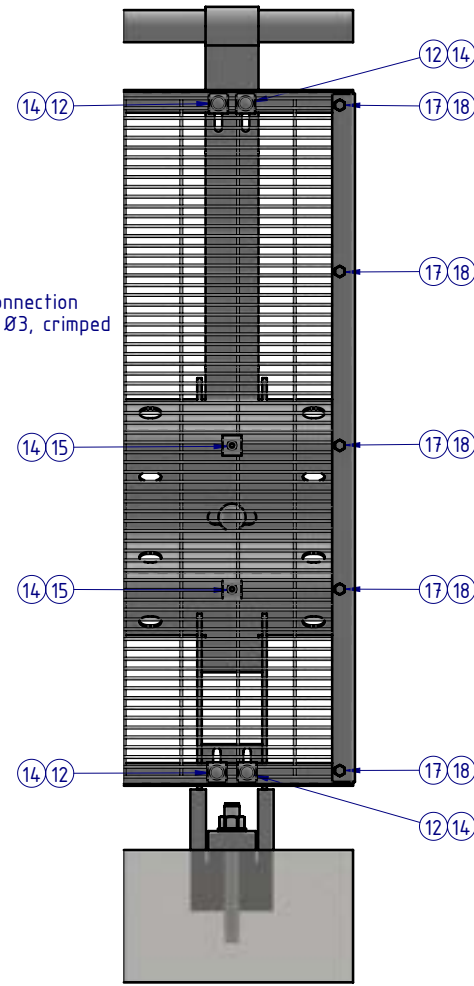


DETAIL F  
AT POST CONNECTION

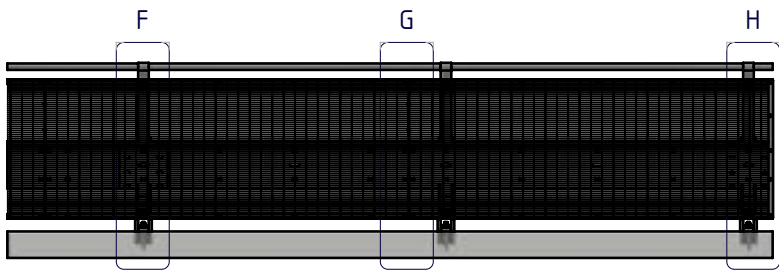
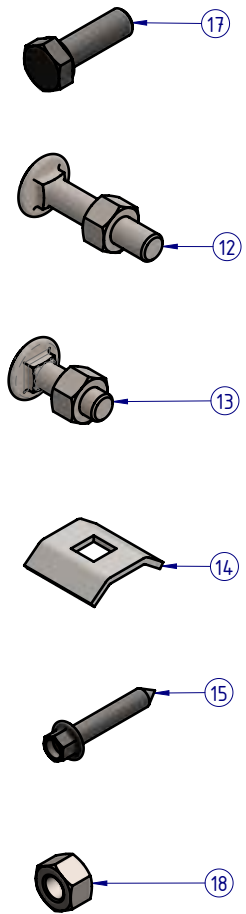


DETAIL G  
MESH PANEL CONNECTION

2-OFF per Mesh Panel connection  
Minimum Galvanised Wire Ø3, crimped  
Vertically equispaced



DETAIL H  
TERMINATION CONNECTION



### MESH PANEL CONNECTION DETAILS

ALL FASTENERS TO BE USED AS SHOWN  
ACCORDING TO CONNECTION TYPE

MATERIAL:		
FINISH:		
STATUS	NAME	DATE
DRAWN	W. Rogulski	21/04/2022
CHK'D	T. Colquhoun	04/05/2022
APPV'D	H. Wallace	04/05/2022



COPYRIGHT All rights reserved. These drawings, plans and specifications and the copyright therein are the properties of Safe Direction Pty Ltd, and must not be used, reproduced or copied wholly or in part without written permission.

U.N.O: TOLERANCES: ±1mm ALL DIMENSIONS ARE IN: mm

**THIRD ANGLE PROJECTION**

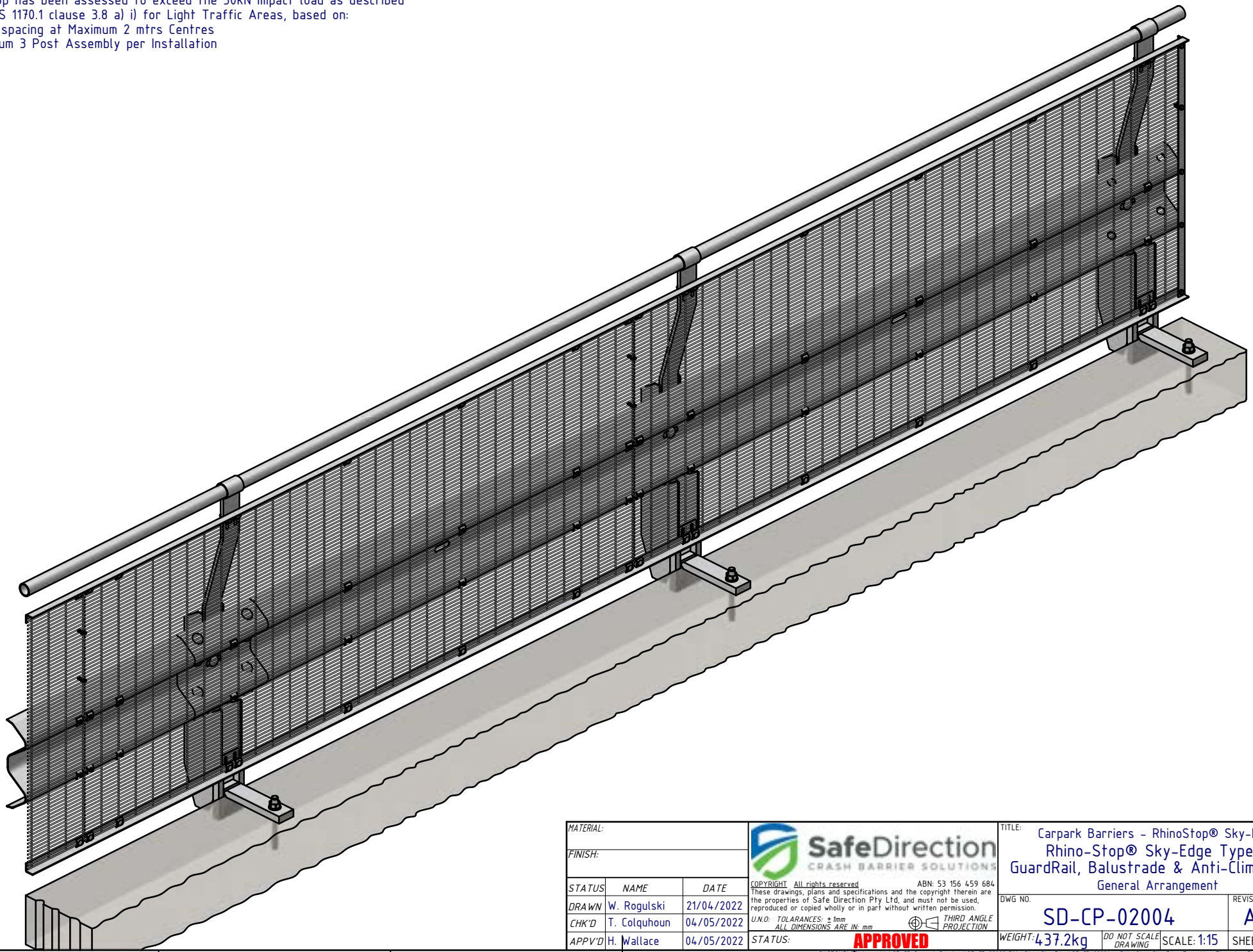
**APPROVED**


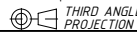
TITLE: Carpark Barriers - RhinoStop® Sky-Edge Rhino-Stop® Sky-Edge Type 4 GuardRail, Balustrade & Anti-Climb Mesh General Arrangement			
DWG NO.	REVISION:	SHEET SIZE	
SD-CP-02004	A	A4	
WEIGHT: 437.2kg	SCALE: 1:10	SHEET 4 of 5	



Rhino-Stop has been assessed to exceed the 30kN impact load as described in AS/NZS 1170.1 clause 3.8 a) i) for Light Traffic Areas, based on:

- Post spacing at Maximum 2 mtrs Centres
- Minimum 3 Post Assembly per Installation



MATERIAL:			 <b>SafeDirection</b> CRASH BARRIER SOLUTIONS		TITLE: Carpark Barriers - RhinoStop® Sky-Edge Rhino-Stop® Sky-Edge Type 4 GuardRail, Balustrade & Anti-Climb Mesh General Arrangement				
FINISH:					<small>COPYRIGHT All rights reserved      ABN: 53 156 459 684</small> <small>These drawings, plans and specifications and the copyright therein are the properties of Safe Direction Pty Ltd, and must not be used, reproduced or copied wholly or in part without written permission.</small>		DWG NO:	REVISION:	SHEET SIZE:
STATUS	NAME	DATE	<small>U.N.O. TOLERANCES: ±1mm</small> <small>ALL DIMENSIONS ARE IN: mm</small>		SD-CP-02004		A	A4	
DRAWN	W. Rogulski	21/04/2022			WEIGHT: 437.2kg		DO NOT SCALE DRAWING	SCALE: 1:15	SHEET 5 of 5
CHK'D	T. Colquhoun	04/05/2022			 <b>APPROVED</b>				
APPV'D	H. Wallace	04/05/2022			STATUS:				