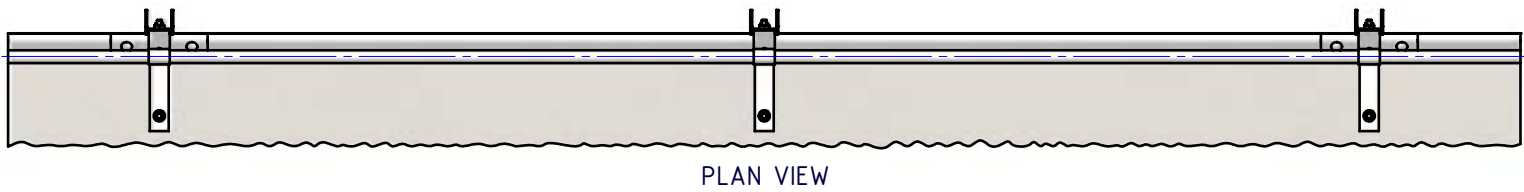


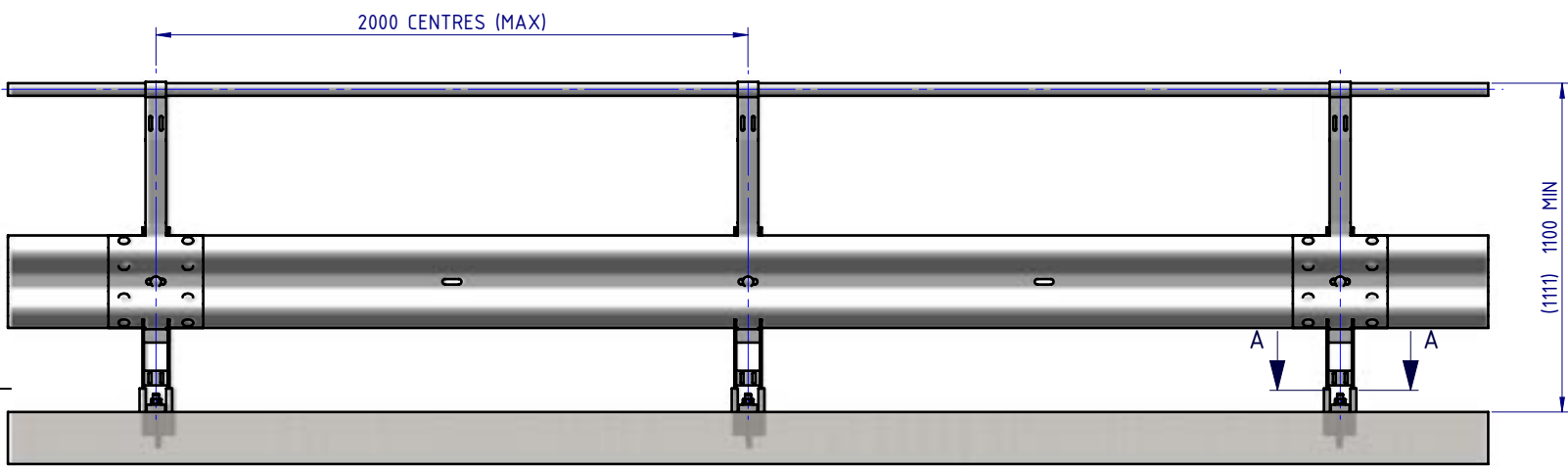
Rhino-Stop has been assessed to exceed the 30kN impact load as described in AS/NZS 1170.1 clause 3.8 a) i) for Light Traffic Areas, based on:

- Post spacing at Maximum 2 mtrs Centres
- Minimum 3 Post Assembly per Installation

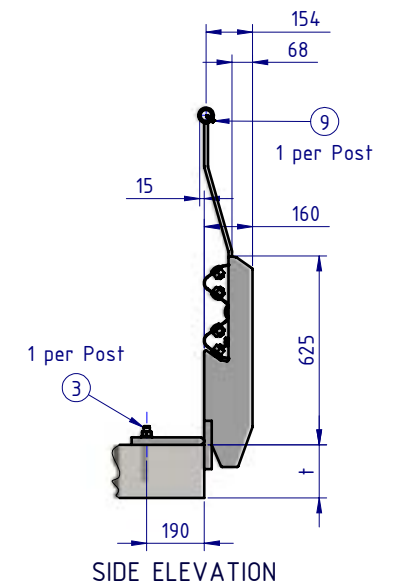
REV.		ZONE		DESCRIPTION	DATE	APPV'D
A				Original Issue, supersedes GR-WB-032	04/05/2022	HW



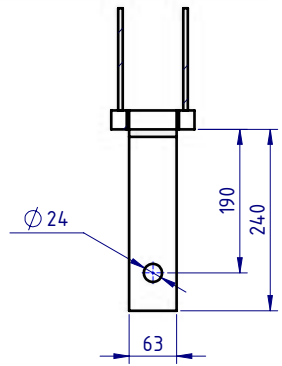
PLAN VIEW



FRONT ELEVATION



SIDE ELEVATION



SECTION A-A
BASE PLATE DETAIL
SCALE 1:10

Post Anchor Bolt Installation Details		
Slab Thickness (t)	≤ 170mm	> 170mm
Anchor Bolt Part #	GR-FS-20-0160-HG	GR-FS-20-0187-HG
Anchor Bolt Type	Fischer FBN II Mechanical	Fischer FBN II Mechanical
Min. Embedment Depth	100mm	130mm
Drill Type	Masonry Bit	Masonry Bit
Drill diameter	Ø20mm	Ø20mm
Drill Depth	105mm	135mm
Minimum Torque	200Nm	200Nm

BOM			
ITEM NO.	PART NUMBER	DESCRIPTION	Weight kg
1	GR-PB-IS-0700-AG	Rhino-Stop® Sky Edge Post	13.7
2	GR-MX-MX-0800-AG	Handrail Extension Type 4	5.3
3	GR-FS-20-0187-HG	FISCHER FBN II, M20x187mm	0.5
4	GR-WB-SR-4000-CG	W-Beam Guardrail 4.0M NLL, 1.0M CTRS	43.3
5	HR-PI-32-6500-AG	Handrail / Sight Rail Pipe 32NB	20.1
6	GR-FS-16-0045-HG	M16x45 Hex Head Bolt & Nut Assy	0.0
7	GR-FS-16-0032-MG	M16x32 SPLICE Hex Bolt & Oversize Nut Assy	0.2
8	GR-FS-16-0050-MG	M16x50 POST Hex Bolt & Nut Assy	0.2
9	GR-FS-14-0025-TG	14g x 25mm Hex Head Screw Self Tapping, 10 tpi, Class5, B8 Coating	

MATERIAL: AS NOTED ON DRAWING

FINISH:		
STATUS	NAME	DATE
DRAWN	W. Rogulski	21/04/2022
CHK'D	T. Colquhoun	4/05/2022
APPV'D	H. Wallace	04/05/2022

SafeDirection
CRASH BARRIER SOLUTIONS

COPYRIGHT. All rights reserved. ABN: 53 156 459 684
These drawings, plans and specifications and the copyright therein are the properties of Safe Direction Pty Ltd, and must not be used, reproduced or copied wholly or in part without written permission.
U.N.O. TOLERANCES: ±1mm ALL DIMENSIONS ARE IN: mm

APPROVED

TITLE: Carpark Barriers - RhinoStop® Sky-Edge Rhino-Stop® Sky-Edge Type 3 GuardRail & Nearside Balustrade General Arrangement

DWG NO: SD-CP-02003 REVISION: A SHEET SIZE: A4

WEIGHT: 384.4kg DO NOT SCALE DRAWING SCALE: 1:25 SHEET 1 of 3

Rhino-Stop has been assessed to exceed the 30kN impact load as described in AS/NZS 1170.1 clause 3.8 a) i) for Light Traffic Areas, based on:

- Post spacing at Maximum 2 mtrs Centres
- Minimum 3 Post Assembly per Installation

A

B

C

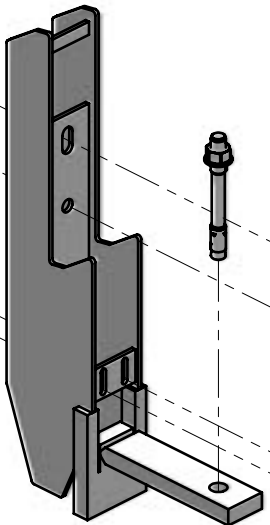
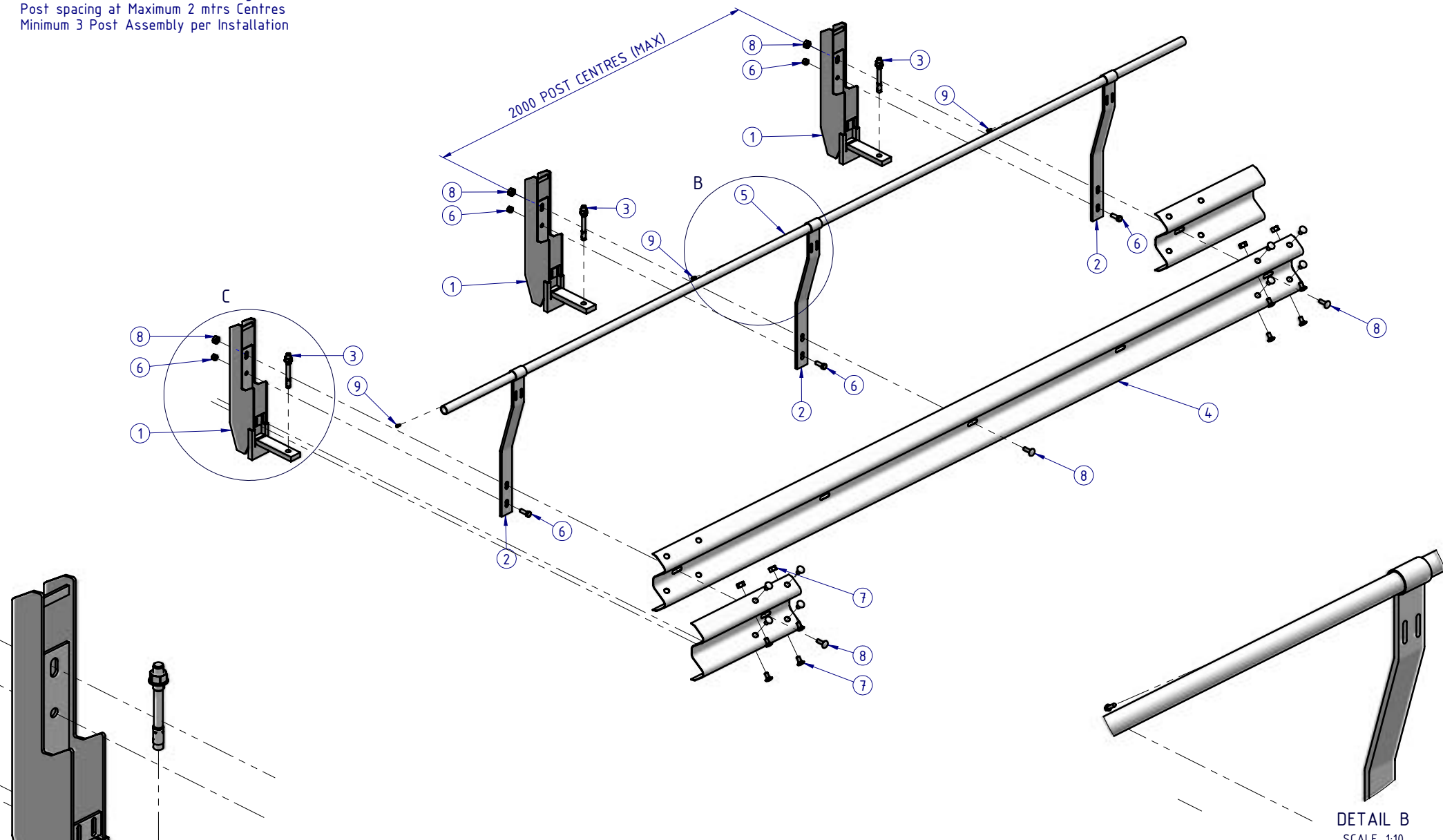
D

A

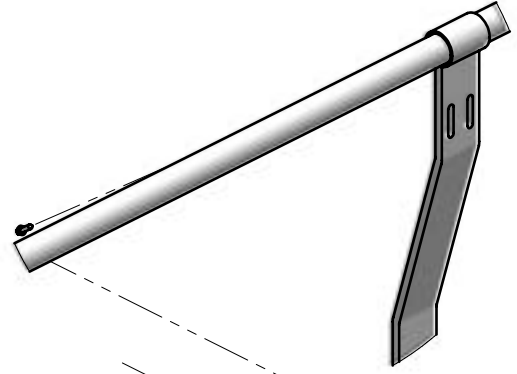
B

C


D



DETAIL C
SCALE 1:10

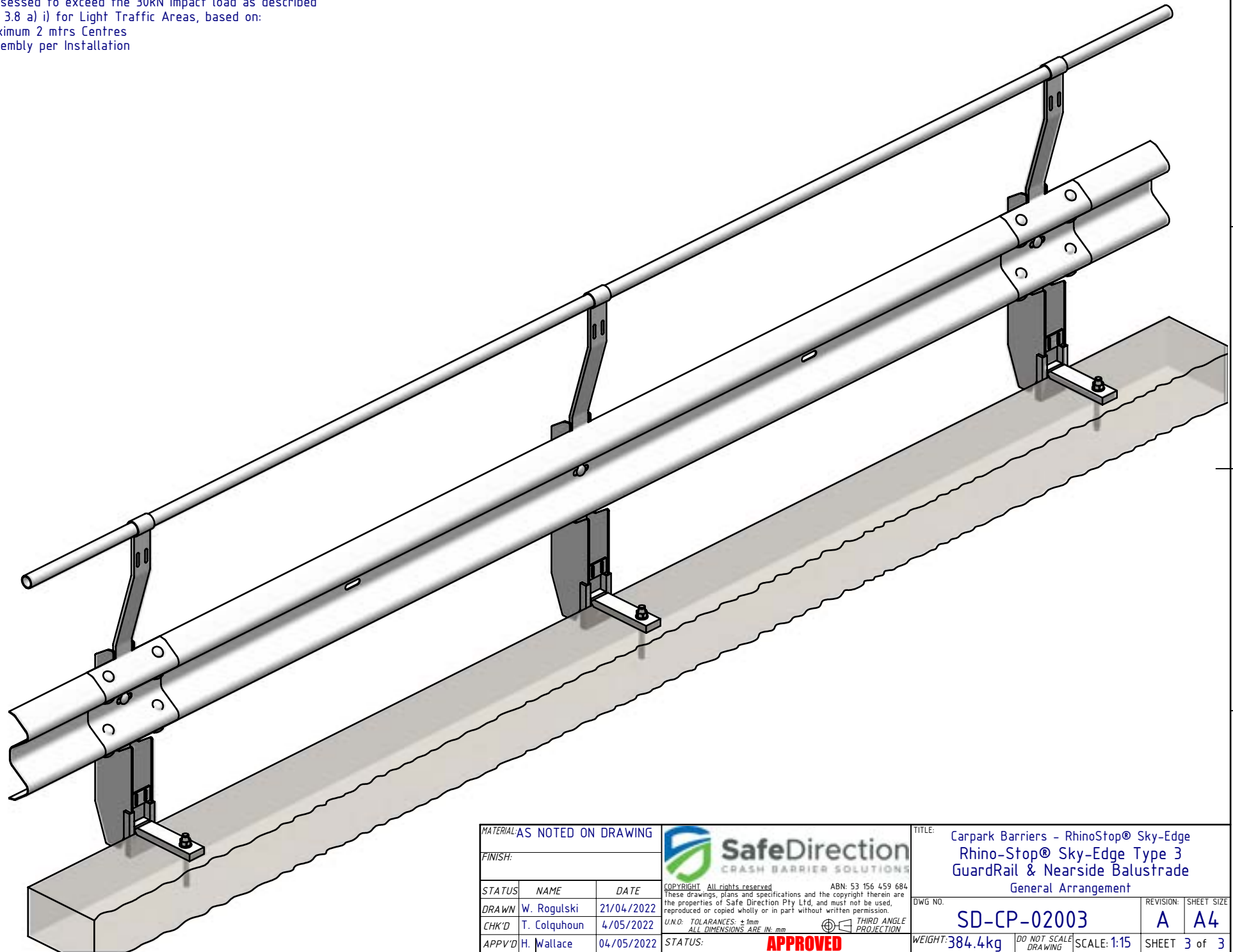



DETAIL B
SCALE 1:10

MATERIAL: AS NOTED ON DRAWING			 <p>SafeDirection CRASH BARRIER SOLUTIONS</p>	TITLE: Carpark Barriers - RhinoStop® Sky-Edge Rhino-Stop® Sky-Edge Type 3 GuardRail & Nearside Balustrade General Arrangement															
FINISH:				DWG NO. SD-CP-02003															
<table border="1"> <thead> <tr> <th>STATUS</th> <th>NAME</th> <th>DATE</th> </tr> </thead> <tbody> <tr> <td>DRAWN</td> <td>W. Rogulski</td> <td>21/04/2022</td> </tr> <tr> <td>CHK'D</td> <td>T. Colquhoun</td> <td>4/05/2022</td> </tr> <tr> <td>APPV'D</td> <td>H. Wallace</td> <td>04/05/2022</td> </tr> </tbody> </table>			STATUS	NAME	DATE	DRAWN	W. Rogulski	21/04/2022	CHK'D	T. Colquhoun	4/05/2022	APPV'D	H. Wallace	04/05/2022	<small>COPYRIGHT All rights reserved. ABN: 53 156 459 684 These drawings, plans and specifications and the copyright therein are the properties of Safe Direction Pty Ltd, and must not be used, reproduced or copied wholly or in part without written permission.</small>			REVISION: A	SHEET SIZE: A4
STATUS	NAME	DATE																	
DRAWN	W. Rogulski	21/04/2022																	
CHK'D	T. Colquhoun	4/05/2022																	
APPV'D	H. Wallace	04/05/2022																	
<small>U.N.O: TOLERANCES: ±1mm ALL DIMENSIONS ARE IN: mm</small>			<small>THIRD ANGLE PROJECTION</small>			WEIGHT: 384.4kg	DO NOT SCALE DRAWING												
<p style="text-align: center;">APPROVED</p>			<p style="text-align: center;">SCALE: 1:25</p>			<p style="text-align: center;">SHEET 2 of 3</p>													

Rhino-Stop has been assessed to exceed the 30kN impact load as described in AS/NZS 1170.1 clause 3.8 a) i) for Light Traffic Areas, based on:

- Post spacing at Maximum 2 mtrs Centres
- Minimum 3 Post Assembly per Installation



MATERIAL: AS NOTED ON DRAWING			 <p>SafeDirection CRASH BARRIER SOLUTIONS</p>	TITLE: Carpark Barriers - RhinoStop® Sky-Edge Type 3 GuardRail & Nearside Balustrade General Arrangement		
FINISH:				DWG NO. SD-CP-02003 REVISION: A SHEET SIZE: A4		
STATUS	NAME	DATE	<small>COPYRIGHT All rights reserved. ABN: 53 156 459 684. These drawings, plans and specifications and the copyright therein are the properties of Safe Direction Pty Ltd, and must not be used, reproduced or copied wholly or in part without written permission.</small>			
DRAWN	W. Rogulski	21/04/2022	<small>U.N.O. TOLERANCES: ±1mm ALL DIMENSIONS ARE IN: mm</small>			
CHK'D	T. Colquhoun	4/05/2022	<small>THIRD ANGLE PROJECTION</small>			
APPV'D	H. Wallace	04/05/2022	APPROVED			
STATUS:			WEIGHT: 384.4kg	DO NOT SCALE DRAWING	SCALE: 1:15	SHEET 3 of 3