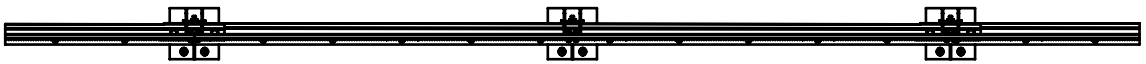
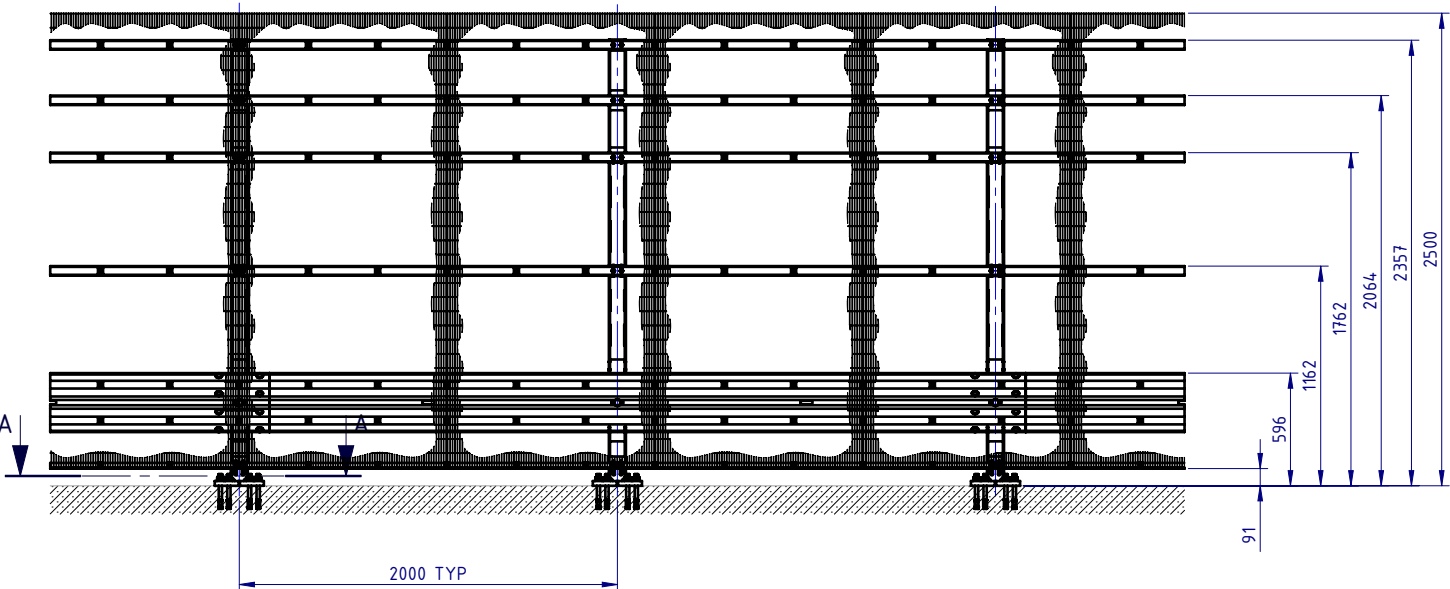


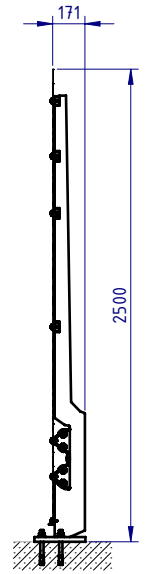
REVISIONS				
REV.	ZONE	DESCRIPTION	DATE	APPV'D
A		Original Issue	15/03/2022	HW



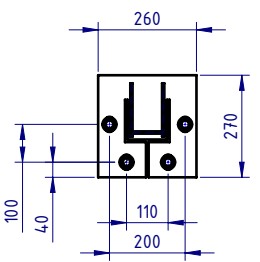
PLAN VIEW




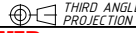
FRONT ELEVATION



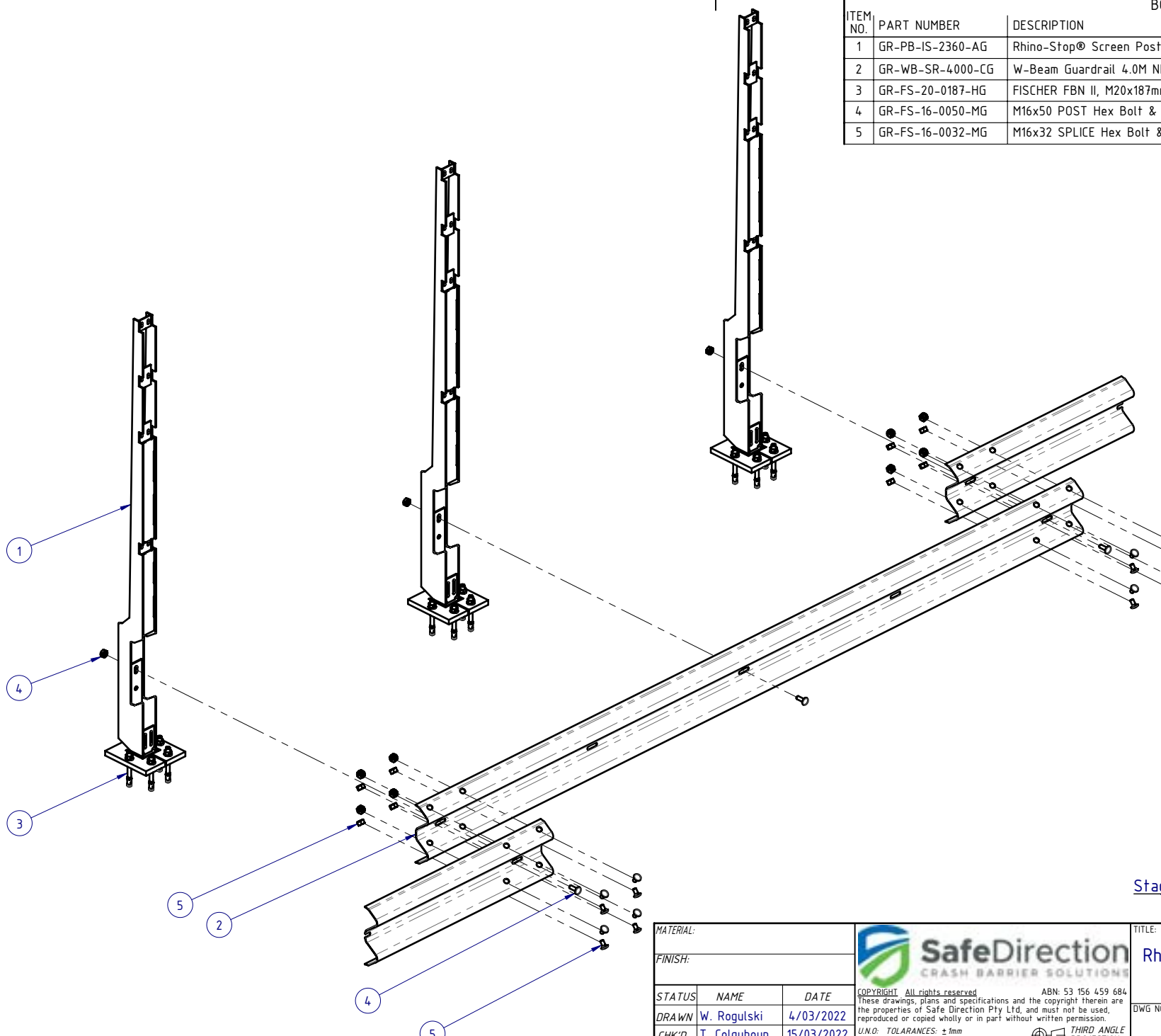
SIDE ELEVATION




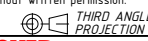
SECTION A-A  
Base Plate Detail  
SCALE 1:20

MATERIAL:			 <b>SafeDirection</b> CRASH BARRIER SOLUTIONS		TITLE: Carpark Barriers - Rhino-Stop® Screen RhinoStop® Screen Type 5, 2500mm High			
FINISH:					General Arrangement			
STATUS	NAME	DATE	<small>COPYRIGHT All rights reserved ABN: 53 156 459 684</small> <small>These drawings, plans and specifications and the copyright therein are the properties of Safe Direction Pty Ltd, and must not be used, reproduced or copied wholly or in part without written permission.</small>		DWG NO.	REVISION:	SHEET SIZE	
DRAWN	W. Rogulski	4/03/2022	<small>U.N.O. TOLARANCES: ±1mm</small> <small>ALL DIMENSIONS ARE IN: mm</small>		 <b>THIRD ANGLE PROJECTION</b>	<b>SD-CP-06005</b>	<b>A</b>	<b>A4</b>
CHK'D	T. Colquhoun	15/03/2022	<small>U.N.O. TOLARANCES: ±1mm</small> <small>ALL DIMENSIONS ARE IN: mm</small>					
APPV'D	H. Wallace	15/03/2022	STATUS: <b>APPROVED</b>		<small>DO NOT SCALE DRAWING</small>			

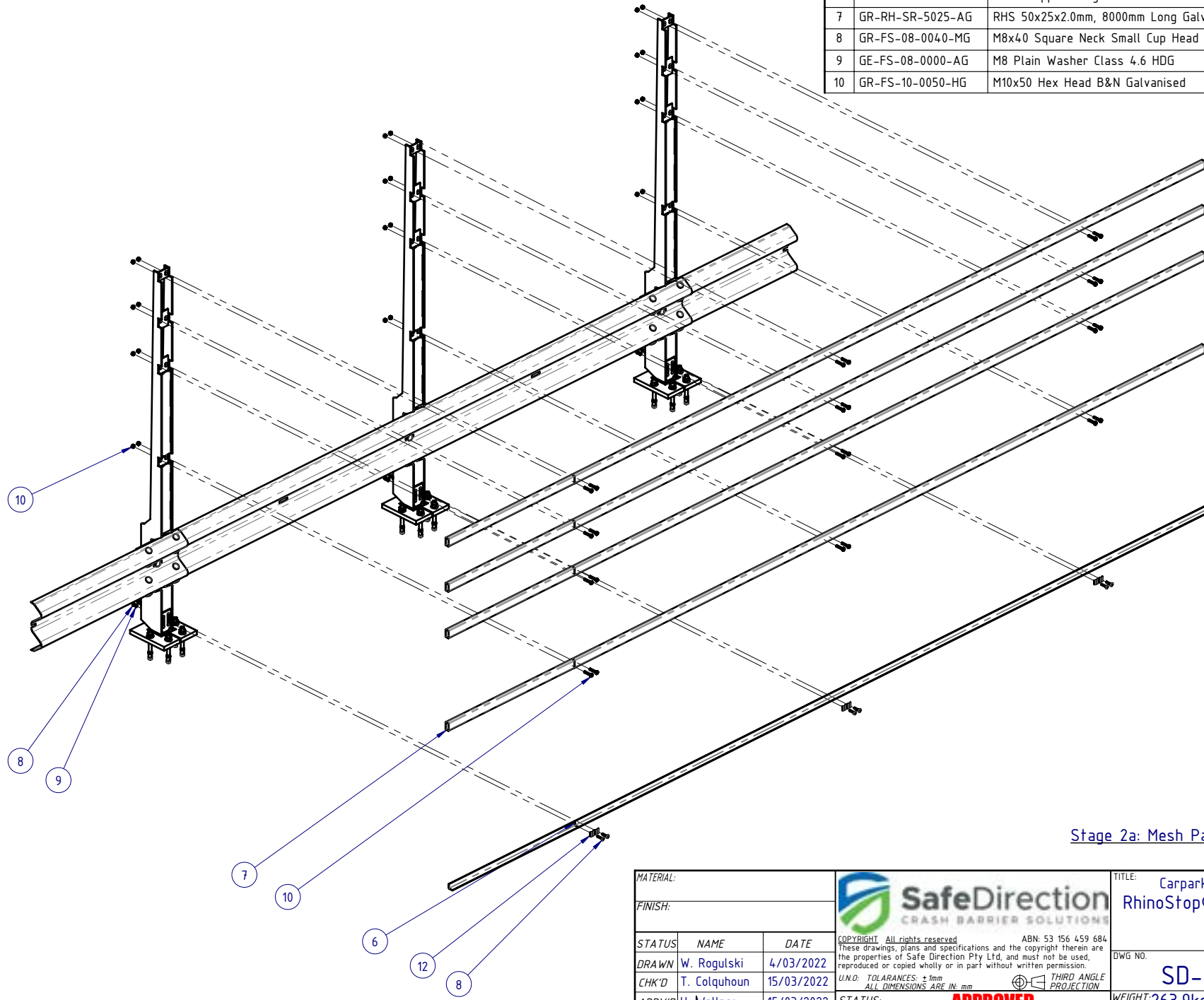
BOM			
ITEM NO.	PART NUMBER	DESCRIPTION	Weight kg
1	GR-PB-IS-2360-AG	Rhino-Stop® Screen Post 2360mm high	35.2
2	GR-WB-SR-4000-CG	W-Beam Guardrail 4.0M NLL, 1.0M CTRS	43.3
3	GR-FS-20-0187-HG	FISCHER FBN II, M20x187mm	0.5
4	GR-FS-16-0050-MG	M16x50 POST Hex Bolt & Nut Assy	0.2
5	GR-FS-16-0032-MG	M16x32 SPLICE Hex Bolt & Oversize Nut Assy	0.2




Stage 1: Post and Rail Assembly

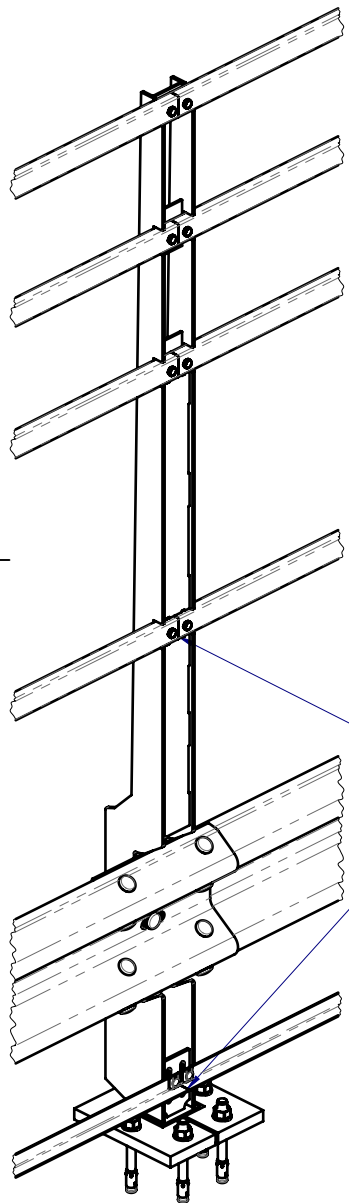
MATERIAL:		 <b>SafeDirection</b> CRASH BARRIER SOLUTIONS	TITLE: Carpark Barriers - Rhino-Stop® Screen RhinoStop® Screen Type 5, 2500mm High		
FINISH:			General Arrangement		
STATUS	NAME	DATE	DWG NO.	REVISION:	SHEET SIZE
DRAWN	W. Rogulski	4/03/2022	SD-CP-06005	A	A4
CHK'D	T. Colquhoun	15/03/2022			
APPV'D	H. Wallace	15/03/2022			
COPYRIGHT: All rights reserved. ABN: 53 156 459 684 These drawings, plans and specifications and the copyright therein are the properties of Safe Direction Pty Ltd, and must not be used, reproduced or copied wholly or in part without written permission.			WEIGHT: 263.9kg	DO NOT SCALE DRAWING	SCALE: 1:25
U.N.O. TOLERANCES: ±1mm ALL DIMENSIONS ARE IN: mm			 THIRD ANGLE PROJECTION		SHEET 2 of 7
STATUS: <b>APPROVED</b>			Friday, 1 April 2022 2:28:52 PM		

BOM			Weight kg
ITEM NO.	PART NUMBER	DESCRIPTION	
6	GR-EA-30-6000-BG	Mesh Support Angle	6.6
7	GR-RH-SR-5025-AG	RHS 50x25x2.0mm, 8000mm Long Galvanised AS1163-C350	17.2
8	GR-FS-08-0040-MG	M8x40 Square Neck Small Cup Head Bolt & Nut Assy	0.0
9	GE-FS-08-0000-AG	M8 Plain Washer Class 4.6 HDG	
10	GR-FS-10-0050-HG	M10x50 Hex Head B&N Galvanised	0.0

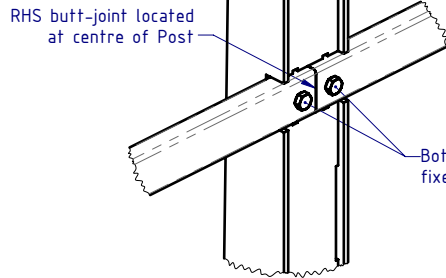


Stage 2a: Mesh Panel Support Elements Assembly

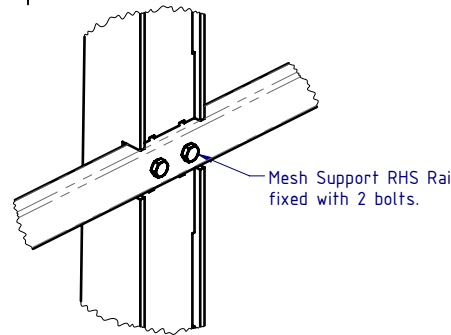
MATERIAL:			 <b>SafeDirection</b> CRASH BARRIER SOLUTIONS		TITLE: Carpark Barriers - Rhino-Stop® Screen RhinoStop® Screen Type 5, 2500mm High			
FINISH:					General Arrangement			
STATUS	NAME	DATE	<small>COPYRIGHT: All rights reserved. ABN: 53 156 459 684</small> <small>These drawings, plans and specifications and the copyright therein are the properties of Safe Direction Pty Ltd, and must not be used, reproduced or copied wholly or in part without written permission.</small> <small>U.N.O. TOLERANCES: ±1mm</small> <small>ALL DIMENSIONS ARE IN: mm</small>			DWG NO.	REVISION:	SHEET SIZE
DRAWN	W. Rogulski	4/03/2022				SD-CP-06005	A	A4
CHK'D	T. Colquhoun	15/03/2022						
APPV'D	H. Wallace	15/03/2022						
STATUS: <b>APPROVED</b>			WEIGHT: 263.9kg	DO NOT SCALE DRAWING	SCALE: 1:30	SHEET 3 of 7		



**DETAIL B**  
SCALE 1:15

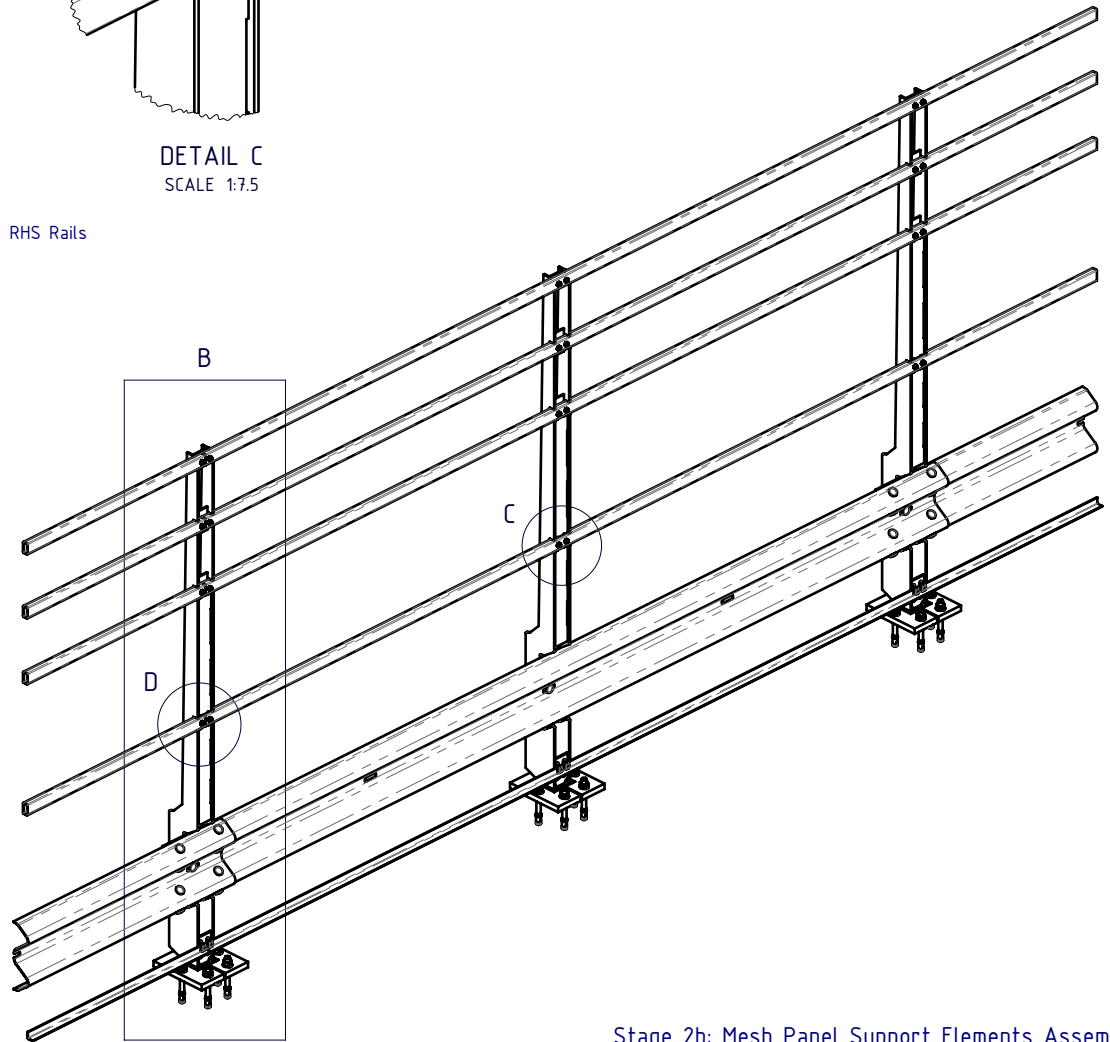


**DETAIL D**  
SCALE 1:7.5


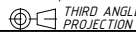


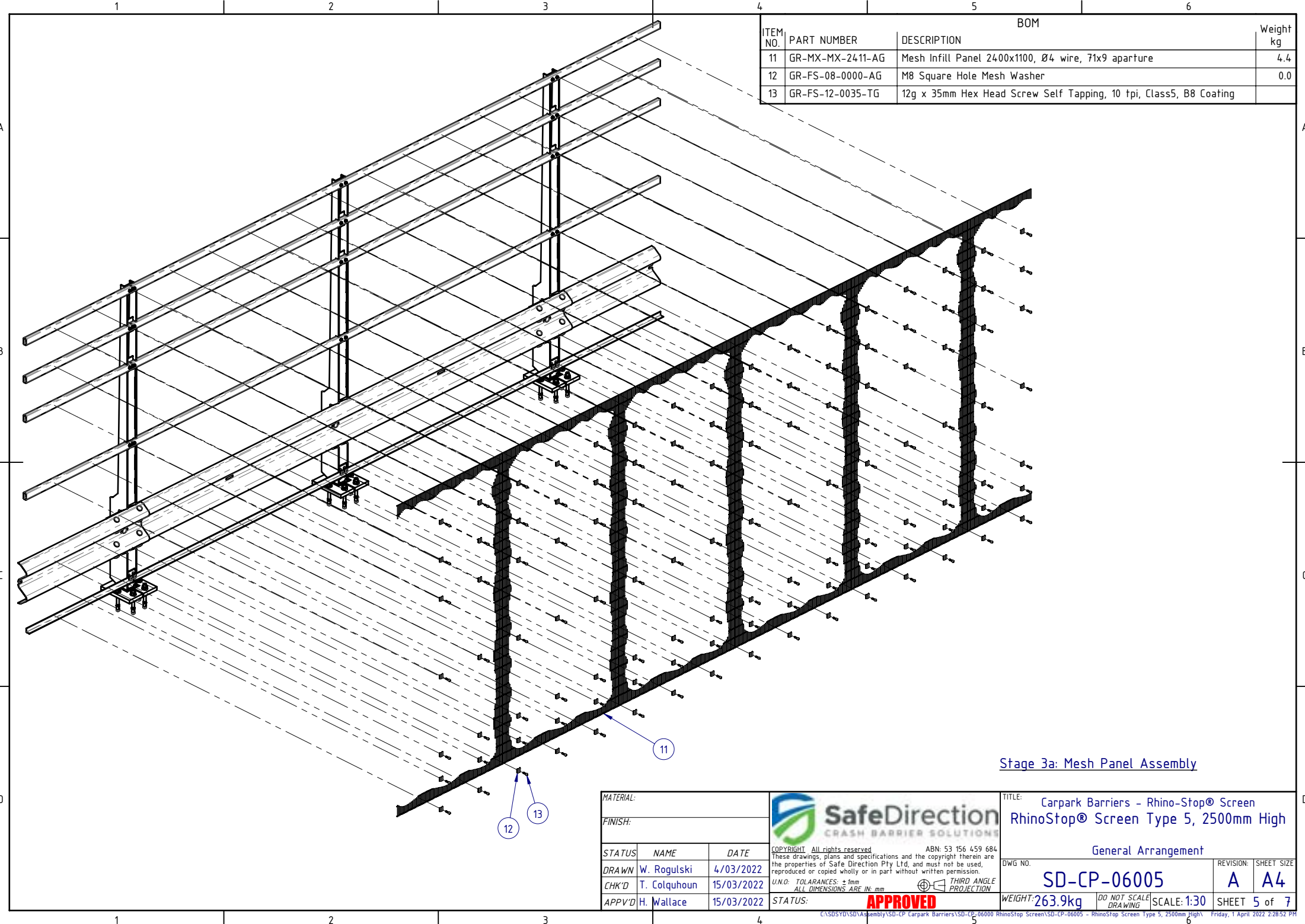
**DETAIL C**  
SCALE 1:7.5

All RHS & Angle Mesh Support Rails MUST be installed with the butt-joint located at centre of Post, and fixed to Post with 2 bolts at all Post locations.




**Stage 2b: Mesh Panel Support Elements Assembly**

MATERIAL:			 <b>SafeDirection</b> CRASH BARRIER SOLUTIONS		TITLE: Carpark Barriers - Rhino-Stop® Screen RhinoStop® Screen Type 5, 2500mm High					
FINISH:					General Arrangement					
STATUS	NAME	DATE	<small>COPYRIGHT All rights reserved. ABN: 53 156 459 684          These drawings, plans and specifications and the copyright therein are the properties of Safe Direction Pty Ltd, and must not be used, reproduced or copied wholly or in part without written permission.</small>			DWG NO.	REVISION:	SHEET SIZE		
DRAWN	W. Rogulski	4/03/2022	<small>U.N.O. TOLERANCES: ±1mm          ALL DIMENSIONS ARE IN: mm</small>  <b>THIRD ANGLE PROJECTION</b>			<b>SD-CP-06005</b>		<b>A</b>	<b>A4</b>	
CHK'D	T. Colquhoun	15/03/2022				WEIGHT: 263.9kg		DO NOT SCALE DRAWING	SCALE: 1:30	SHEET 4 of 7
APPV'D	H. Wallace	15/03/2022				STATUS: <b>APPROVED</b>				

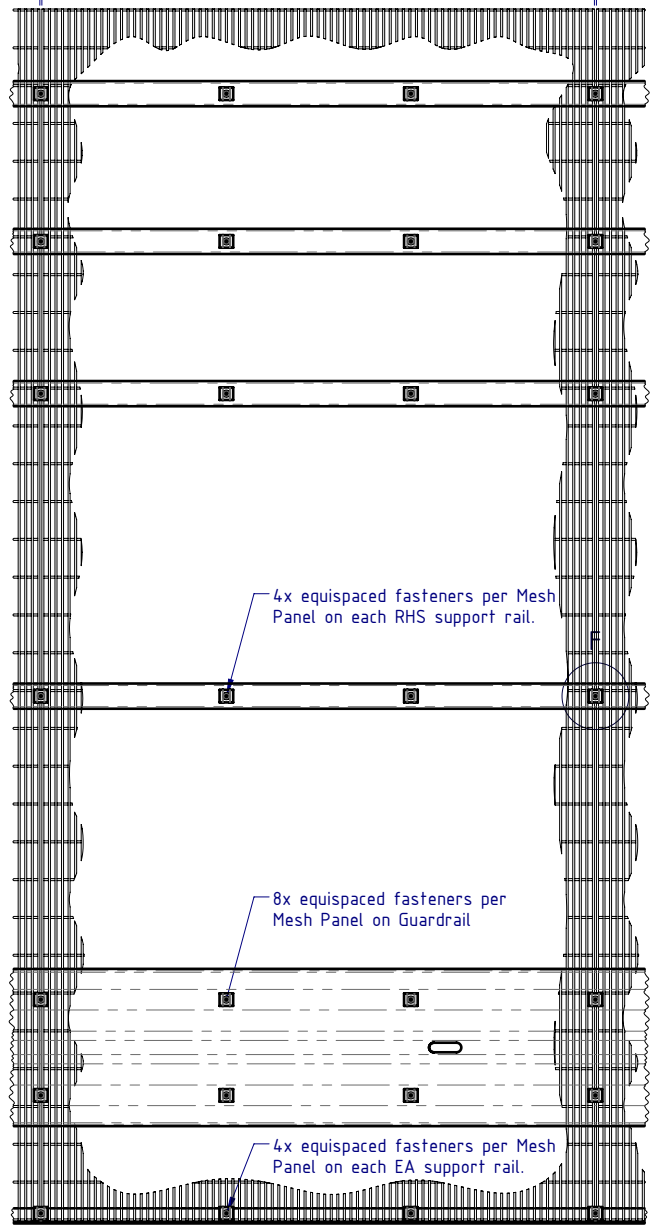


BOM			Weight kg
ITEM NO.	PART NUMBER	DESCRIPTION	
11	GR-MX-MX-2411-AG	Mesh Infill Panel 2400x1100, Ø4 wire, 71x9 aparture	4.4
12	GR-FS-08-0000-AG	M8 Square Hole Mesh Washer	0.0
13	GR-FS-12-0035-TG	12g x 35mm Hex Head Screw Self Tapping, 10 tpi, Class5, B8 Coating	

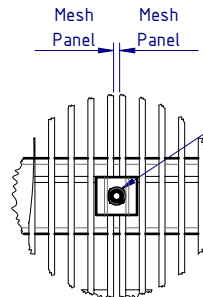
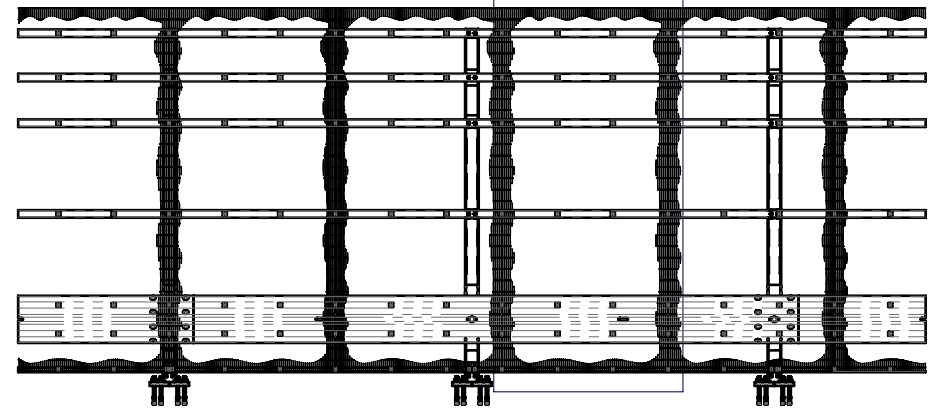
Stage 3a: Mesh Panel Assembly

MATERIAL:		 <p><b>SafeDirection</b> CRASH BARRIER SOLUTIONS</p>	TITLE: Carpark Barriers - Rhino-Stop® Screen RhinoStop® Screen Type 5, 2500mm High		
FINISH:			General Arrangement		
STATUS	NAME	DATE	DWG NO.	REVISION:	SHEET SIZE
DRAWN	W. Rogulski	4/03/2022	SD-CP-06005	A	A4
CHK'D	T. Colquhoun	15/03/2022			
APPV'D	H. Wallace	15/03/2022			
U.N.O: TOLARANCES: ±1mm ALL DIMENSIONS ARE IN: mm			THIRD ANGLE PROJECTION		WEIGHT: 263.9kg
STATUS: <b>APPROVED</b>			DO NOT SCALE DRAWING		SCALE: 1:30
COPYRIGHT: All rights reserved. ABN: 53 156 459 684 These drawings, plans and specifications and the copyright therein are the properties of Safe Direction Pty Ltd, and must not be used, reproduced or copied wholly or in part without written permission.			SHEET 5 of 7		Friday, 1 April 2022 2:28:52 PM

Mesh Panel      Mesh Panel      Mesh Panel



DETAIL E  
SCALE 1:15




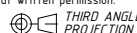
DETAIL F  
SCALE 1:5

Fastener located between Mesh Panels, with Profiled Mesh Washer lapping both Mesh Panels. TYP

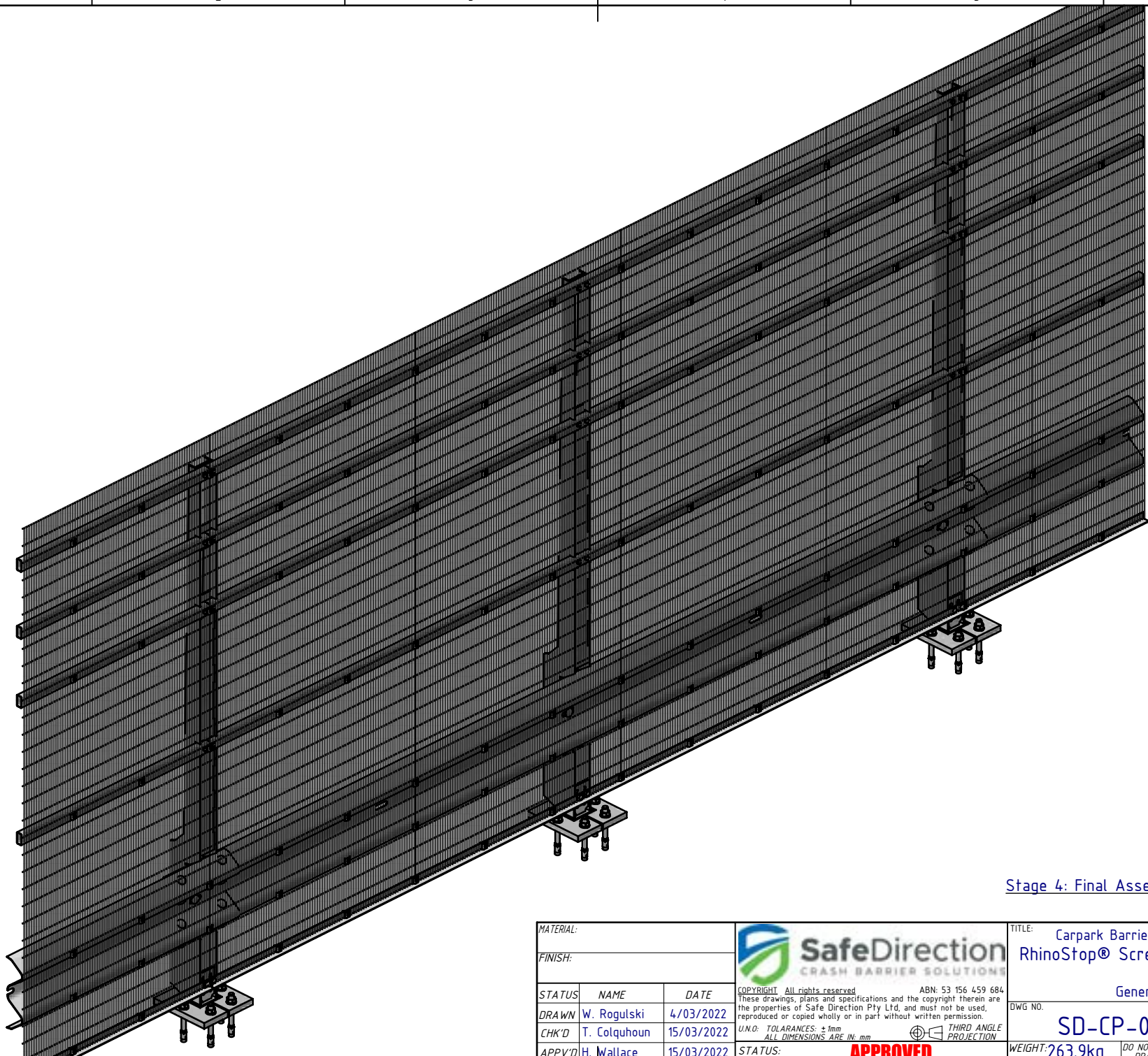
Mesh Panel Assembly Notes:

1. Position first Mesh Panel in Portrait orientation, resting on bottom EA support rail.
2. Position adjacent Mesh Panels with a 5-10mm gap to allow for fixing screw between each Panel.
3. Fix Mesh Panels as indicated in Detail E and Detail F views.
4. Each Mesh Panel to be fixed with 28x Self Tapping Screws and Profiled Mesh Washers.


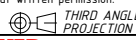
Stage 3b: Mesh Panel Assembly

MATERIAL:			 <p>SafeDirection CRASH BARRIER SOLUTIONS</p>		TITLE: Carpark Barriers - Rhino-Stop® Screen RhinoStop® Screen Type 5, 2500mm High							
FINISH:					General Arrangement							
STATUS	NAME	DATE	<small>COPYRIGHT. All rights reserved. ABN: 53 156 459 684 These drawings, plans and specifications and the copyright therein are the properties of Safe Direction Pty Ltd, and must not be used, reproduced or copied wholly or in part without written permission.</small>			DWG NO.	REVISION:	SHEET SIZE				
DRAWN	W. Rogulski	4/03/2022				<small>U.N.O. TOLERANCES: ±1mm ALL DIMENSIONS ARE IN: mm</small> 			SD-CP-06005	A	A4	
CHK'D	T. Colquhoun	15/03/2022							WEIGHT: 263.9kg	DO NOT SCALE DRAWING	SCALE: 1:30	SHEET 6 of 7
APPV'D	H. Wallace	15/03/2022							STATUS: <b>APPROVED</b>			





Stage 4: Final Assembly

MATERIAL:			 <p><b>SafeDirection</b> CRASH BARRIER SOLUTIONS</p>		TITLE: Carpark Barriers - Rhino-Stop® Screen RhinoStop® Screen Type 5, 2500mm High			
FINISH:					General Arrangement			
STATUS	NAME	DATE	<small>COPYRIGHT All rights reserved ABN: 53 156 459 684 These drawings, plans and specifications and the copyright therein are the properties of Safe Direction Pty Ltd, and must not be used, reproduced or copied wholly or in part without written permission.</small>		DWG NO.	REVISION:	SHEET SIZE	
DRAWN	W. Rogulski	4/03/2022	<small>U.N.O. TOLERANCES: ±1mm ALL DIMENSIONS ARE IN: mm</small>			SD-CP-06005	A	A4
CHK'D	T. Colquhoun	15/03/2022	<small>THIRD ANGLE PROJECTION</small>					
APPV'D	H. Wallace	15/03/2022	<b>APPROVED</b>		WEIGHT: 263.9kg	DO NOT SCALE DRAWING	SCALE: 1:20	SHEET 7 of 7